

Roma - AIE – 28-29 maggio 2012

Utilizzazione dei registri nell'ambito della salute mentale

Prof. Francesco Amaddeo

Presidente SIEP

Sezione di Psichiatria e Psicologia Clinica

Dipartimento di Sanità Pubblica e Medicina di Comunità

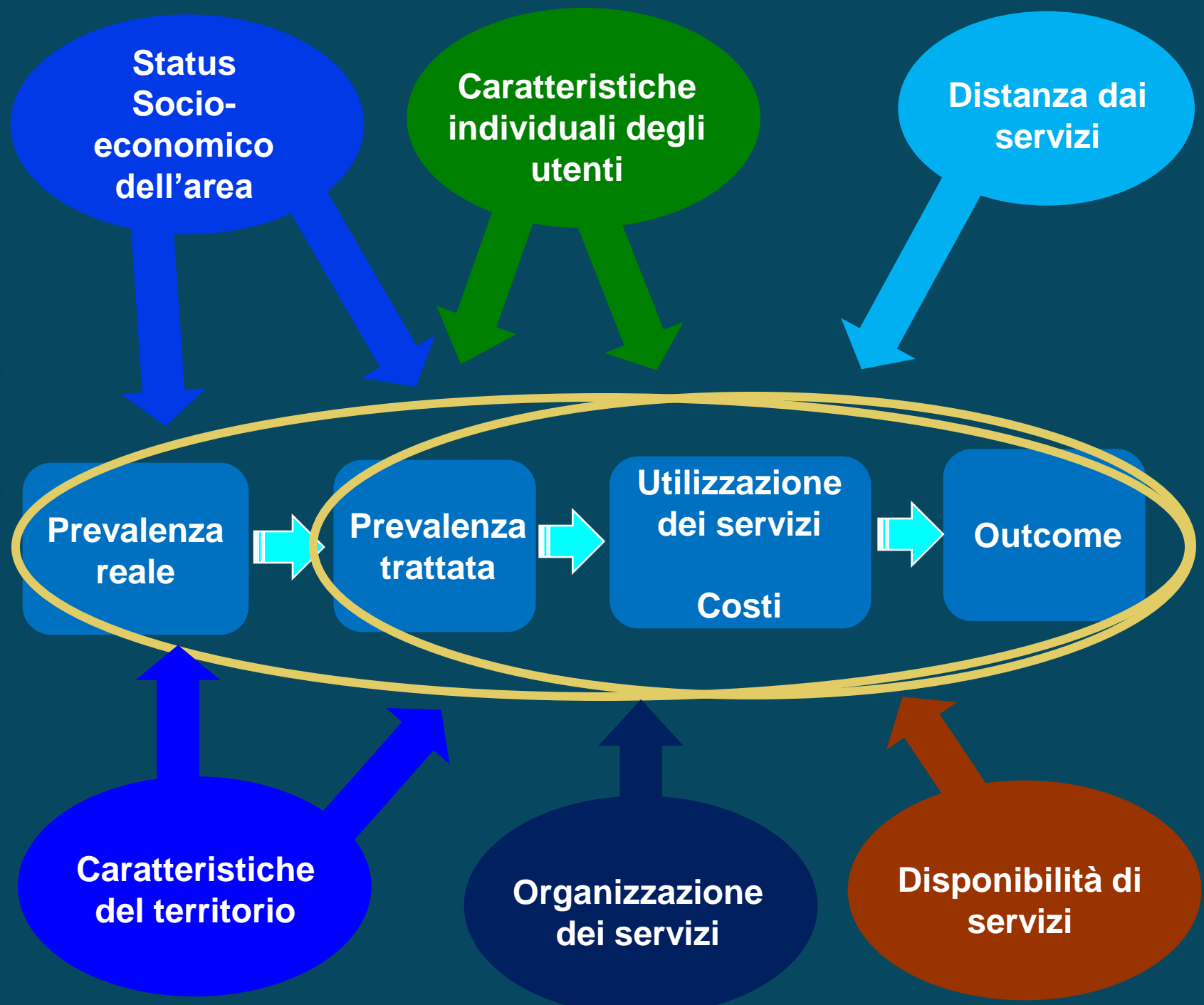
Università di Verona

**WHO Collaborating Centre for Research and Training in Mental
Health and Service Evaluation**



WHO
Collaborating
Centre

DSPMC - PSY



Le priorità in salute mentale

- **Promozione e prevenzione**
- **Interventi precoci**
- **Uniformare la qualità dell'assistenza psichiatrica**



WHO
Collaborating
Centre

DSPMC - PSY



WHO
Collaborating
Centre

DSPMC - PSY

“Un registro psichiatrico dei casi è una registrazione, longitudinale e centrata sul paziente, dei contatti che una determinata popolazione ha con un insieme definito di servizi psichiatrici.”

Adattato dalla definizione dell'Organizzazione Mondiale della Sanità di Registro Psichiatrico dei Casi, 1983

Registri Psichiatrici dei Casi

- **Livello nazionale**

- Danimarca - 5.447.084 ab
- Israele - 6.921.400 ab

- **Livello regionale**

- Cantone di Zurigo (Svizzera) 1.200.000 ab
- Victoria (Australia) - 5.012.700 ab

- **Livello locale**

- Registro Psichiatrico di Verona (Italia) – 450.000 ab
- Registro Psichiatrico di Groningen (Olanda) – 450.000 ab
- Registro Psichiatrico di Tromso (Norvegia) – 50.000 ab



WHO
Collaborating
Centre

DSPMC - PSY

Analisi condotte con i registri psichiatrici

- **Analisi epidemiologiche classiche:**
 - studi di prevalenza e incidenza
 - analisi dei pattern di utilizzazione
 - analisi temporali (trends)
- **Supporto ad analisi condotte con altri strumenti:**
 - identificazione di coorti
 - follow-up di coorti identificate in modo clinico
- **Analisi e studi speciali:**
 - linkage con altri sistemi informativi
 - studi di geografia sanitaria
 - valutazioni dei costi dell'assistenza



WHO
Collaborating
Centre

DSPMC - PSY

Registro Psichiatrico dei Casi di Verona-Sud & Sistema Informativo Dipartimentale Assistenza Psichiatrica - ULSS 20

Catchment area:

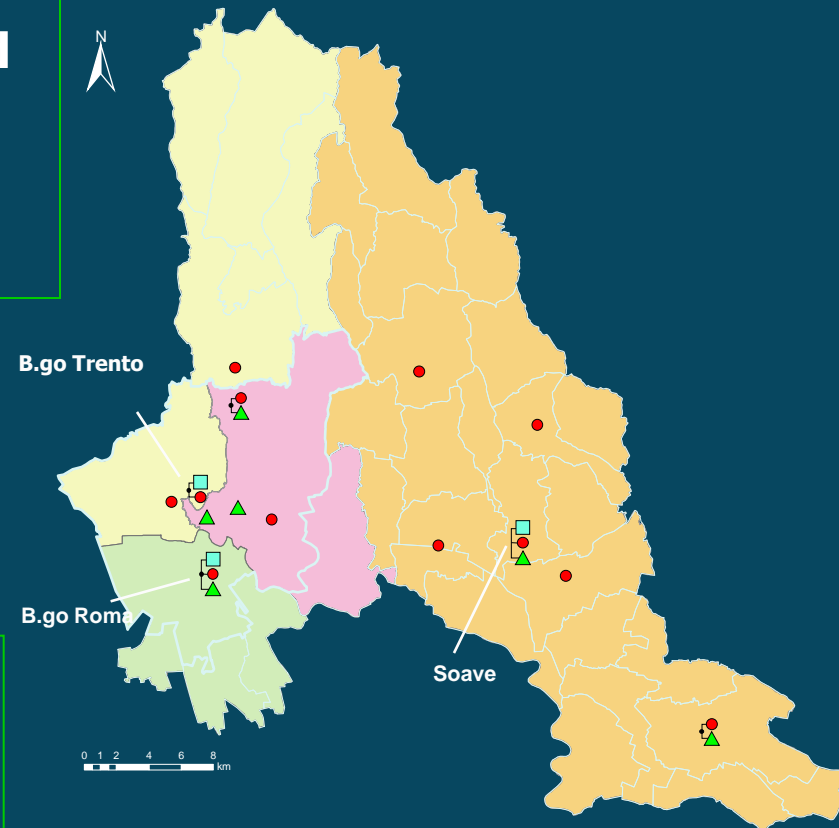
- ✓ da dicembre 1978 – Verona-Sud
100,000 abitanti circa
- ✓ da gennaio 2000 - ULSS 20
500,000 abitanti circa

Record nel sistema:

- ✓ 35.200 pazienti
- ✓ 1.760.000 contatti

PUBBLICAZIONI:

- 60 Articoli su riviste internazionali
- 20 Capitoli su libri internazionali
- 20 Articoli su riviste nazionali
- 15 Capitoli su libri nazionali
- 4 Libri italiani



WHO
Collaborating
Centre

DSPMC - PSY

Unità di Ricerca:

Registro Psichiatrico dei Casi, Epidemiologia, Geografia ed Economia della Salute Mentale

Staff

**Professor Francesco Amaddeo - Dr.Med., Ph.D.
Professor of Psychiatry**

Dr. Alberto Rossi - Ph.D. – Psicologist

Dr. Laura Grigoletti - Ph.D. - Psicologist

Dr. Ilaria Montagni - Ph.D. Student

Dr. Damiano Salazzari - Ph.D. - Geographer

Dr. Valeria Donisi – Ph.D. – Psicologist

Dr. Laura Rabbi – Social Worker

Dr. Federico Tedeschi - Ph.D – Statistician

Ms Cristina Pighi & Ms Sabrina Zulian- Data Managers

**Dr. Gianluca Rambaldelli & Mr. Mario Ballarin
– IT Managers**



WHO
Collaborating
Centre

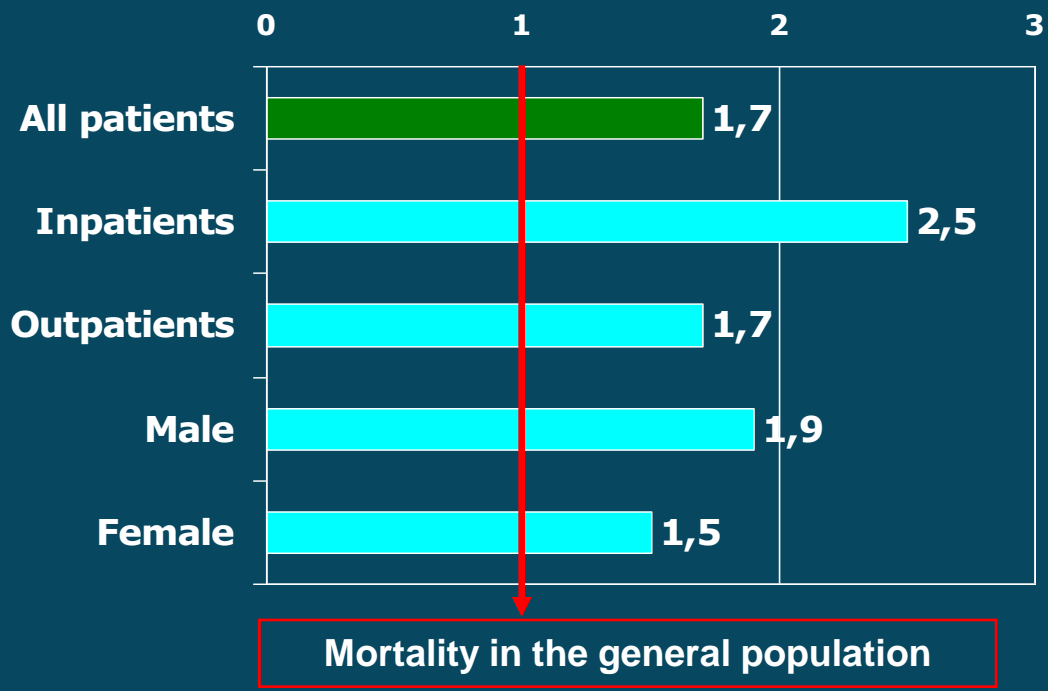
DSPMC - PSY



WHO
Collaborating
Centre

DSPMC - PSY

Mortality among psychiatric patients 1982-2006 (25 years FU)



	Person-Years	O	E	SMR	IC 95%
All patients	100762	1518	891.93	1.70*	(1.61-1.79)
Inpatients	19892	547	220.06	2.48*	(2.28-2.70)
Outpatients	80464	1111	672.06	1.65*	(1.55-1.75)
Maschi	45051	794	422.85	1.87*	(1.75-2.01)
Femmine	55711	724	469.09	1.54*	(1.43-1.66)

* p < 0.05

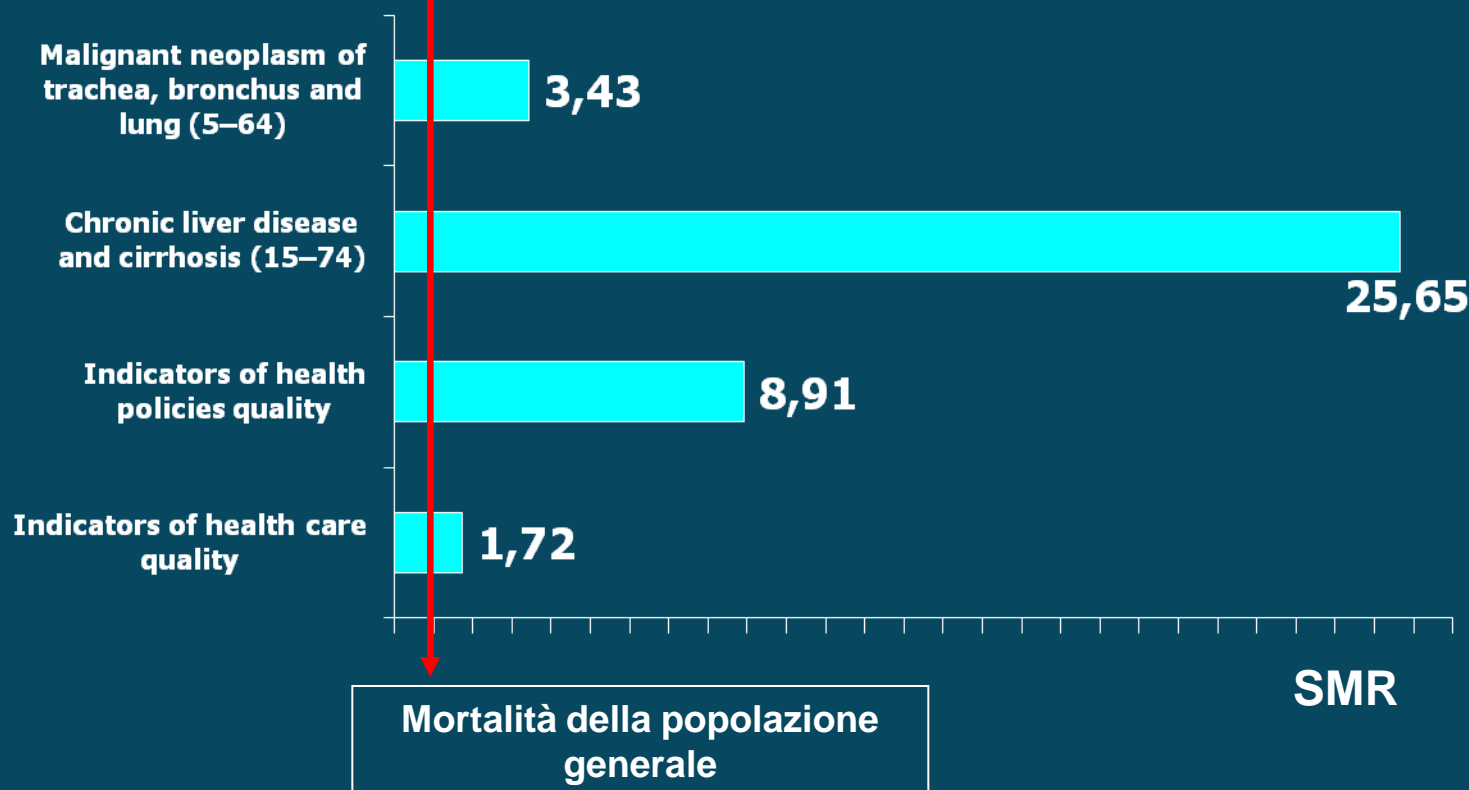
Avoidable mortality of psychiatric patients in an area with a community-based system of mental health care

Amaddeo F, Barbui C, Perini G, Biggeri A, Tansella M. Avoidable mortality of psychiatric patients in an area with a community-based system of mental health care.

Objective: To ascertain the existence of an excess of avoidable mortality among psychiatric patients in an area with a *community-based* system of care, to identify predictors of higher risk of avoidable mortality and to provide some possible indication to reduce avoidable

**F. Amaddeo¹, C. Barbui¹,
G. Perini¹, A. Biggeri²,
M. Tansella¹**

¹Department of Medicine and Public Health, Section of Psychiatry and Clinical Psychology, University of Verona, Verona, Italy, and ²Department of Statistics, University of Florence, Florence, Italy



WHO
Collaborating
Centre

DSPMC - PSY

Analisi condotte con i sistemi informativi

- **Analisi epidemiologiche classiche:**
 - studi di prevalenza e incidenza
 - analisi dei pattern di utilizzazione
 - analisi temporali (trends)
- **Supporto ad analisi condotte con altri strumenti:**
 - identificazione di coorti
 - follow-up di coorti identificate in modo clinico
- **Analisi e studi speciali:**
 - linkage con altri sistemi informativi
 - studi di geografia sanitaria
 - valutazioni dei costi dell'assistenza



WHO
Collaborating
Centre

DSPMC - PSY



WHO
Collaborating
Centre



ELSEVIER

2006

HEALTH
& PLACE

Health & Place ■ (■■■) ■■■-■■■

www.elsevier.com/locate/healthplace

The ecological relationship between deprivation, social isolation and rates of hospital admission for acute psychiatric care: a comparison of London and New York City

Sarah Curtis^{a,*}, Alison Copeland^a, James Fagg^a, Peter Congdon^a, Michael Almog^b, Justine Fitzpatrick^c

^aDepartment of Geography, Health Research Group, Queen Mary College, University of London, London, UK

(dark shading = more deprived)

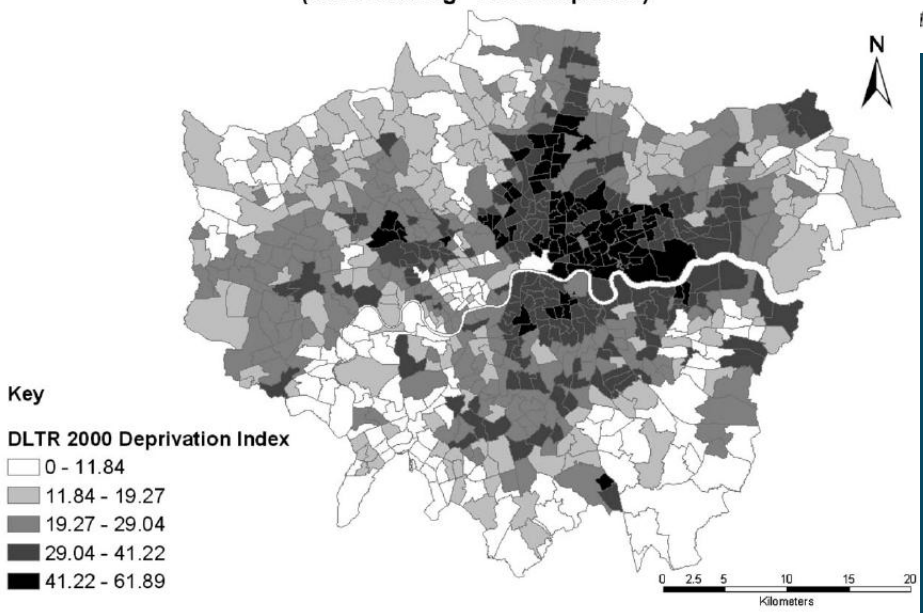


Fig. 1. ODPM index of deprivation 2000; London wards.

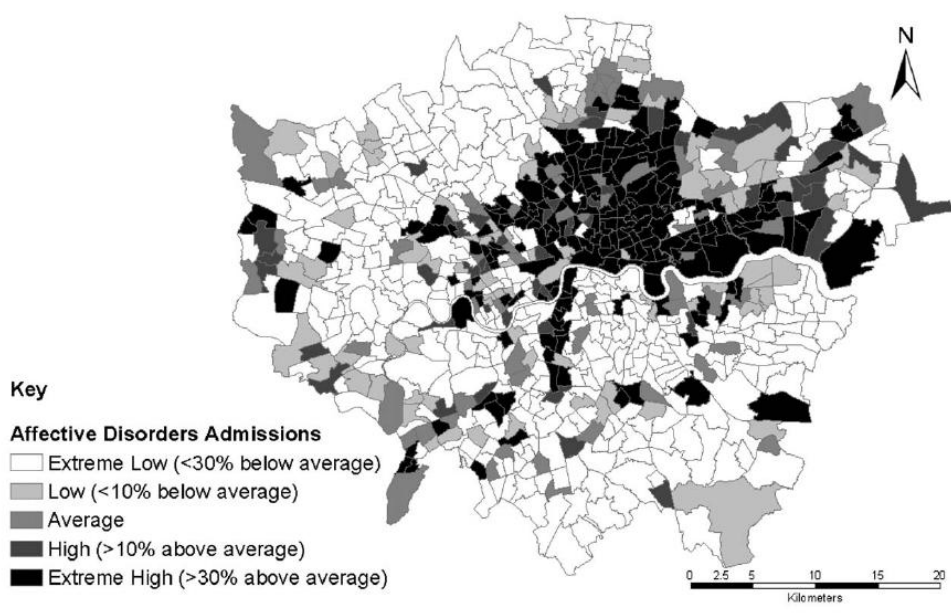


Fig. 3. Standardized admission ratios: acute psychiatric admissions, London wards c. 1998: males 15-64, affective disorders.



WHO
Collaborating
Centre

DSPMC - PSY



ELSEVIER

Social Science & Medicine 61 (2005) 2096–2105

2005

SOCIAL
SCIENCE
&
MEDICINE

www.elsevier.com/locate/socscimed

A census-based socio-economic status (SES) index as a tool to examine the relationship between mental health services use and deprivation

Juan Eduardo Tello, Julia Jones, Paola Bonizzato, Mariangela Mazzi, Francesco Amaddeo*, Michele Tansella

Department of Medicine and Public Health, Section of Psychiatry and Clinical Psychology, University of Verona, Policlinico G.B. Rossi, P.le L. Scuro 10, 37134 Verona, Italy

Available online 26 May 2005

Acta Psychiatr Scand 2005; 112: 215–223
All rights reserved
DOI: 10.1111/j.1600-0447.2005.00558.x

2005

Copyright © Blackwell Munksgaard 2005
ACTA PSYCHIATRICA
SCANDINAVICA

Does socioeconomic status affect the use of community-based psychiatric services? A south Verona case register study

Tello JE, Mazzi M, Tansella M, Bonizzato P, Jones J, Amaddeo F. Does socioeconomic status affect the use of community-based psychiatric services? A south Verona case register study. *Acta Psychiatr Scand* 2005; 112: 215–223. © Blackwell Munksgaard 2005.

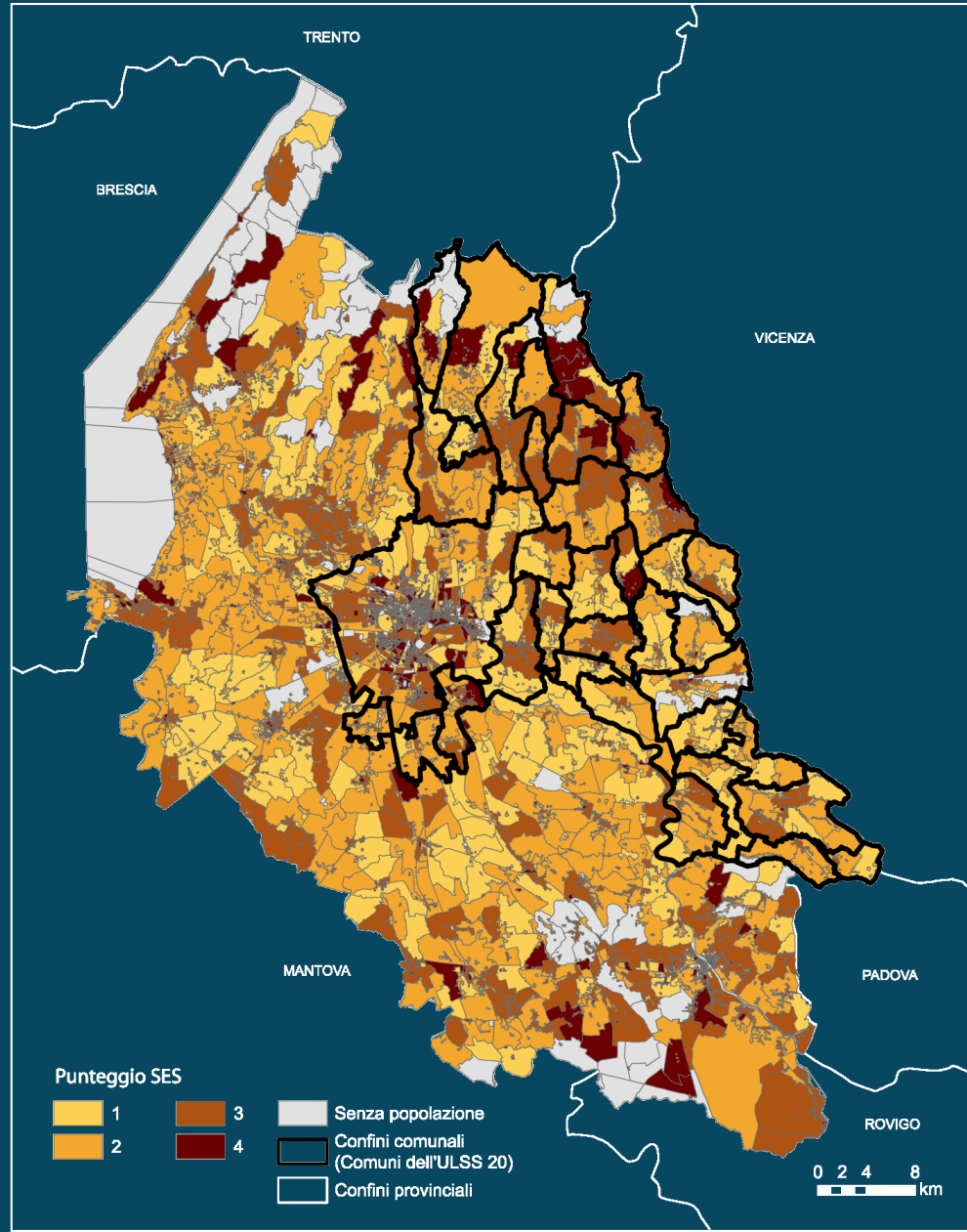
J. E. Tello, M. Mazzi, M. Tansella, P. Bonizzato, J. Jones, F. Amaddeo
Department of Medicine and Public Health, Section of Psychiatry and Clinical Psychology, University of Verona, Verona, Italy

Indice SES – Provincia di Verona



WHO
Collaborating
Centre

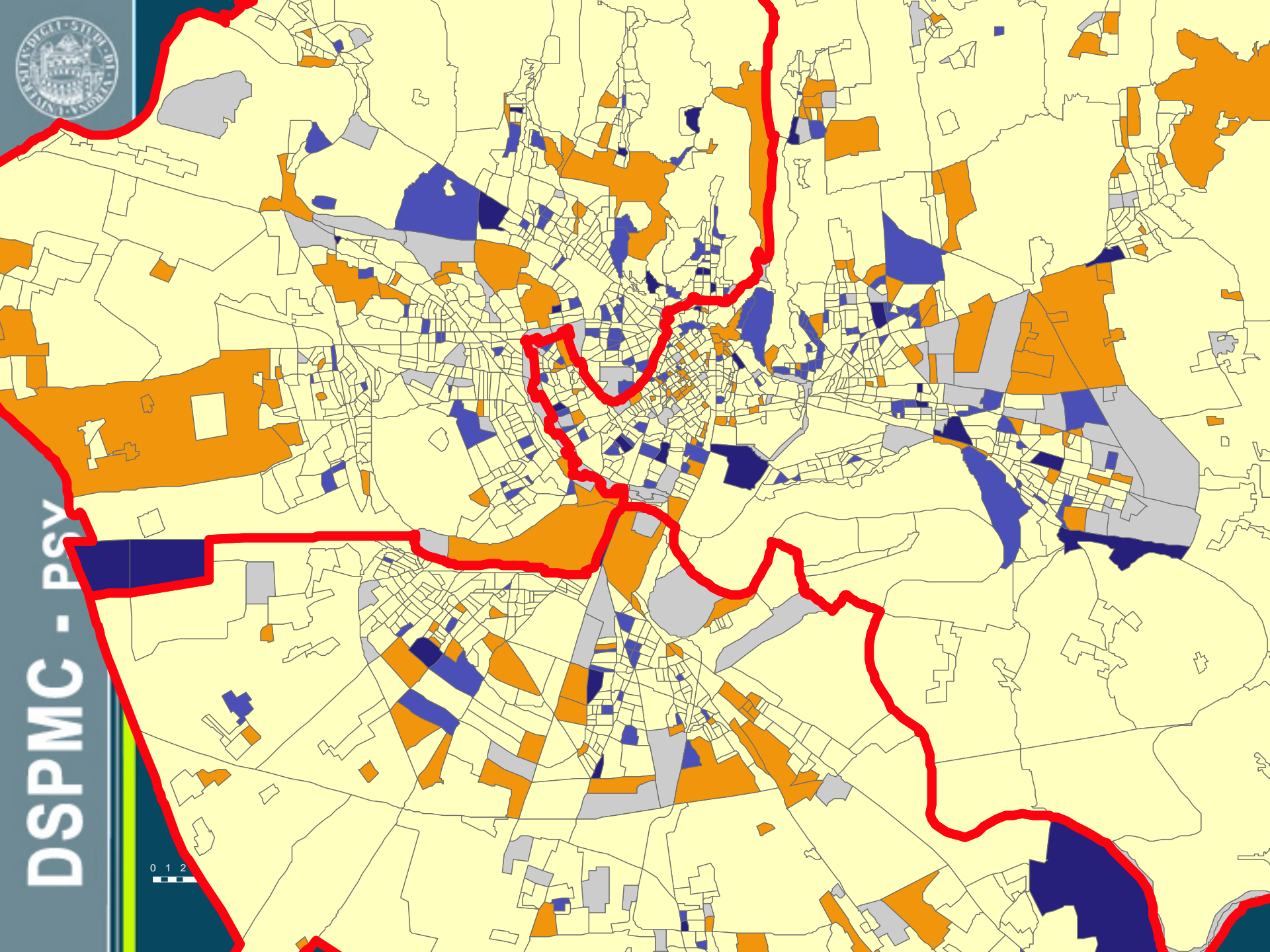
DSPMC - PSY



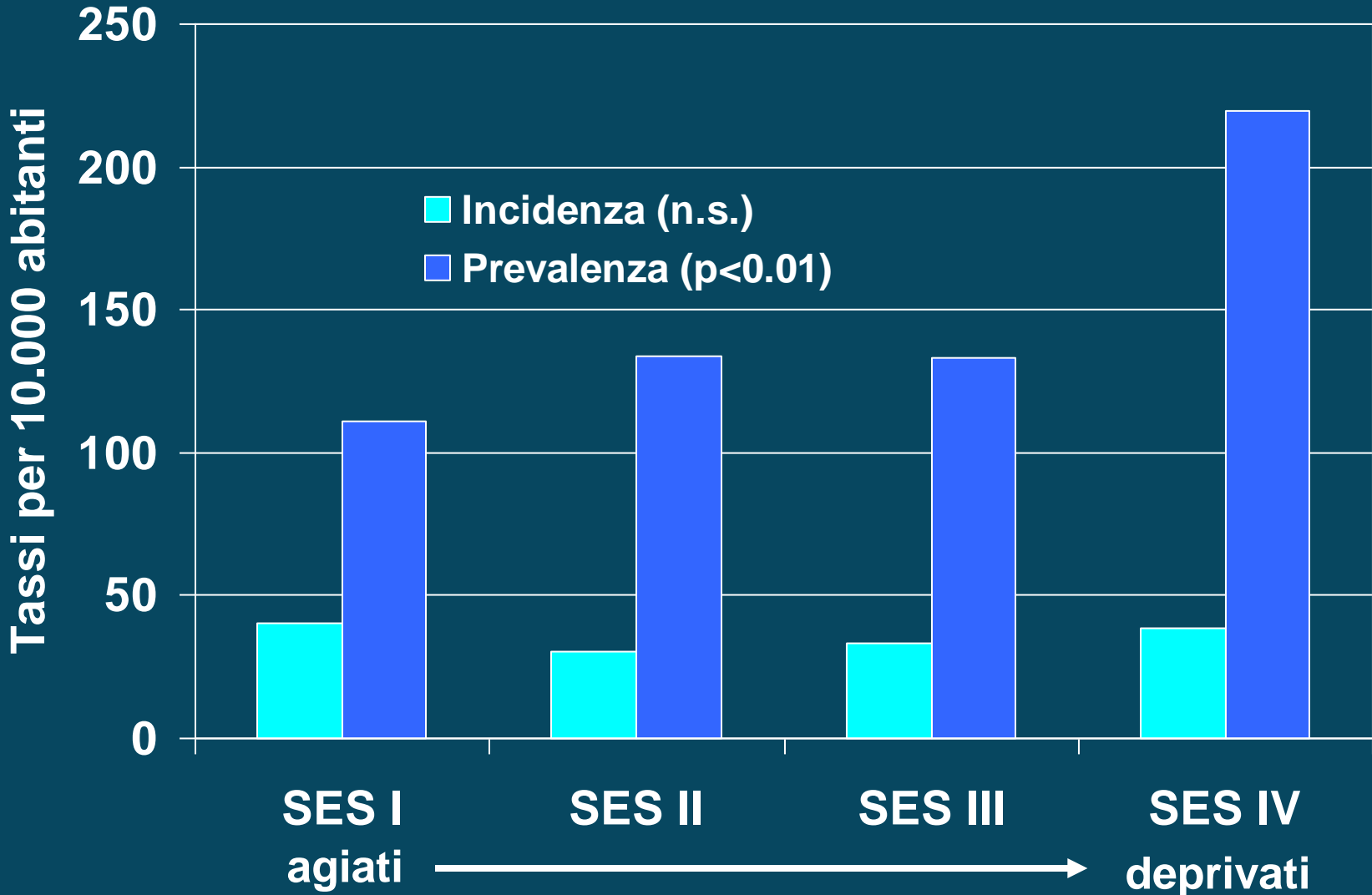


DSPMC - PSV

0 1 2



Incidenza e prevalenza per SES

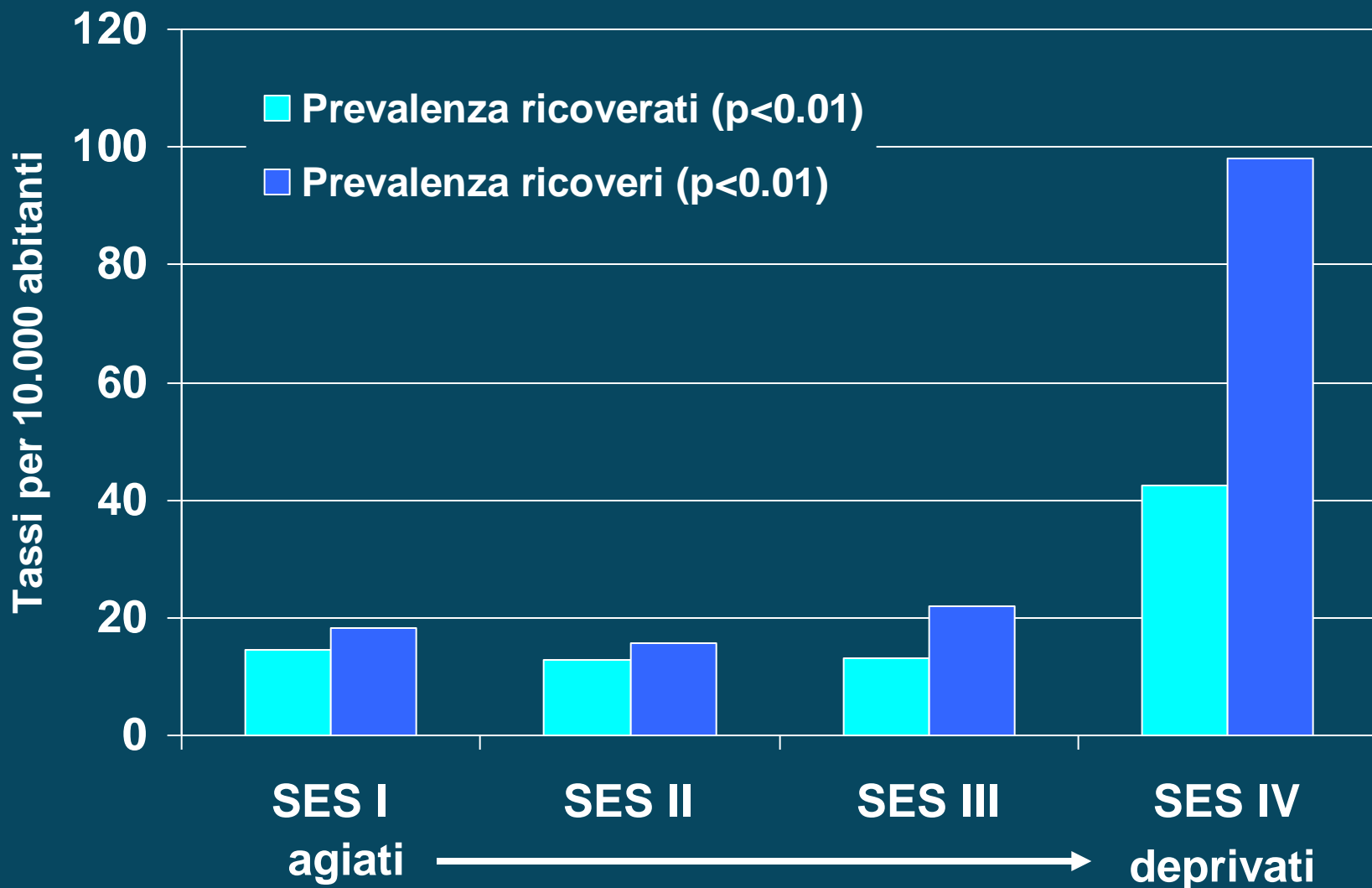




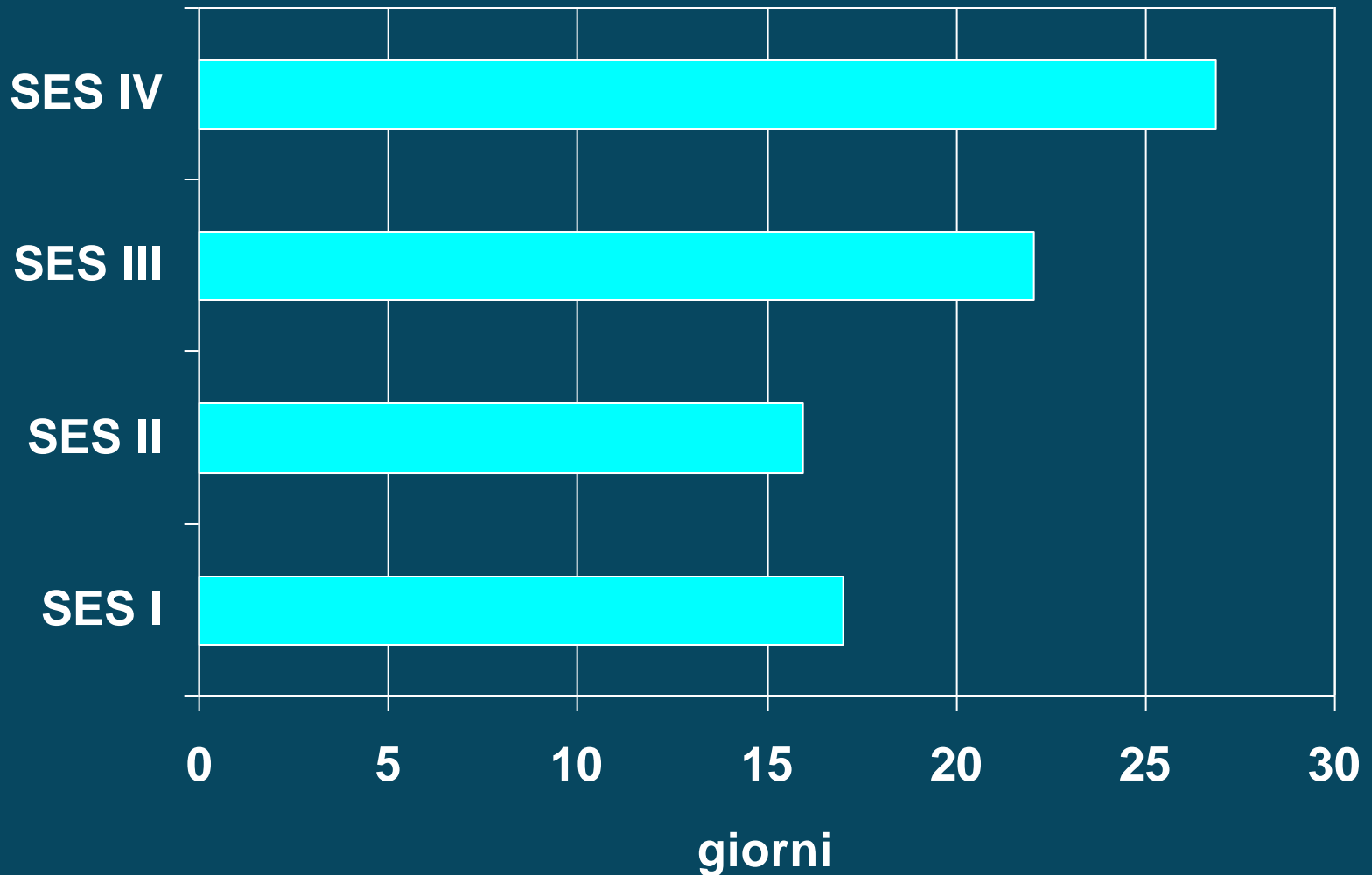
WHO
Collaborating
Centre

DSPMC - PSY

Indici di ospedalizzazione per SES



Durata della degenza per SES



WHO
Collaborating
Centre

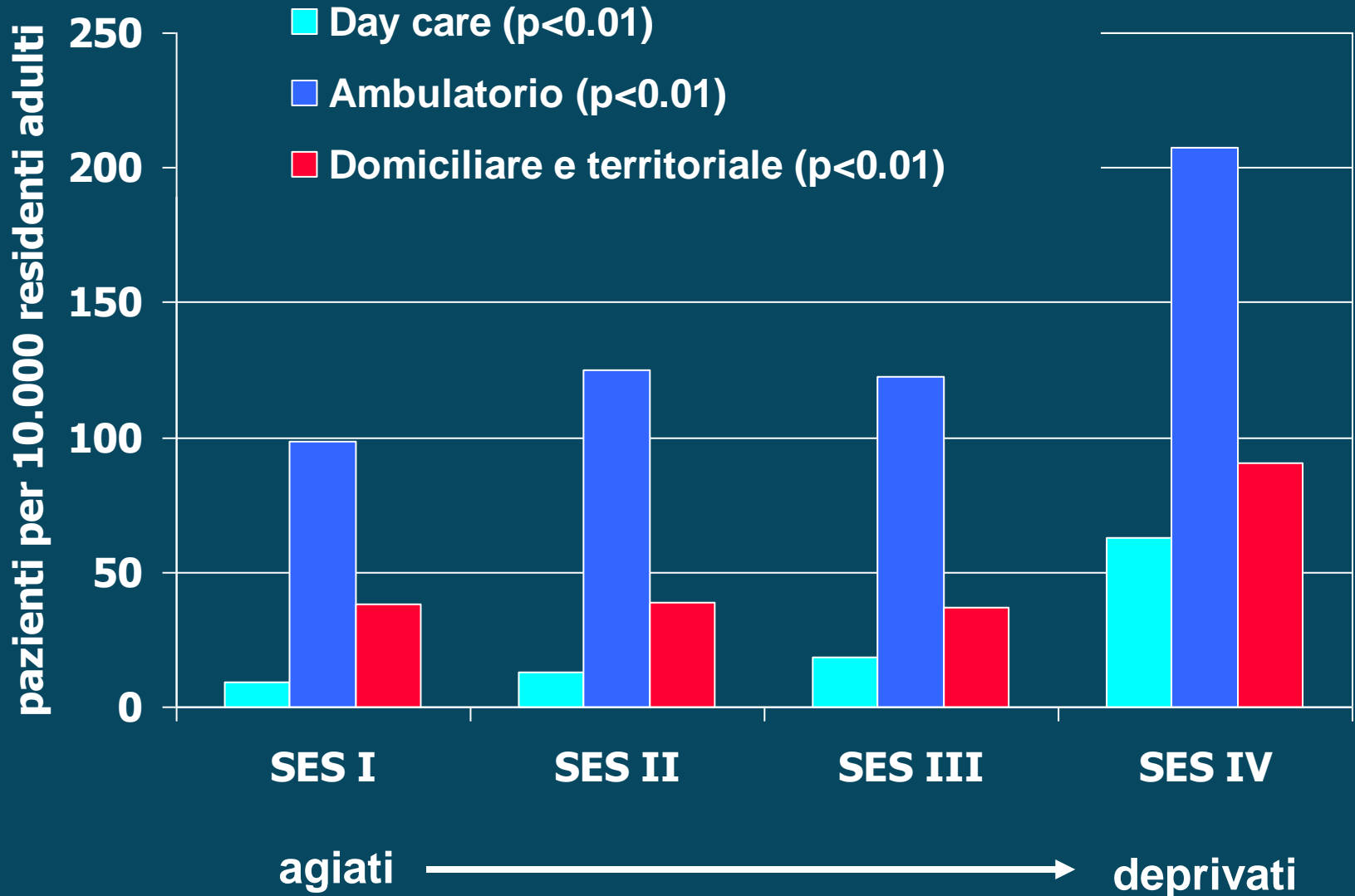
DSPMC - PSY



WHO
Collaborating
Centre

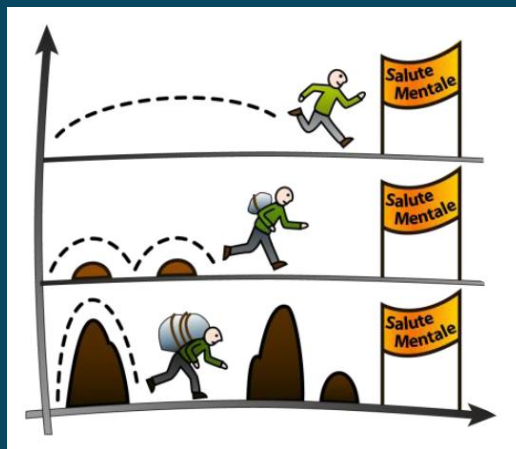
DSPMC - PSY

Prevalenza territoriale per SES



Il progetto

“Status socio-economico, urbanizzazione e salute mentale”



Francesco Amaddeo, Valeria Donisi, Riccardo Pertile, Federico Tedeschi, Damiano Salazzari, Laura Grigoletti, Andrea Fiorillo, Corrado De Rosa, Mauro Percudani, Linda Confalonieri, Michele Tansella

Dip. Sanità Pubblica e Medicina di Comunità, Sezione di Psichiatria e Psicologia Clinica, Università di Verona
Dip. di Salute Mentale, A.O. "G. Salvini", Garbagnate Milanese
Dip. di Psichiatria, Università di Napoli, SUN



WHO
Collaborating
Centre

DSPMC - PSY





WHO
Collaborating
Centre

DSPMC - PSY

Studio Multicentrico Italiano

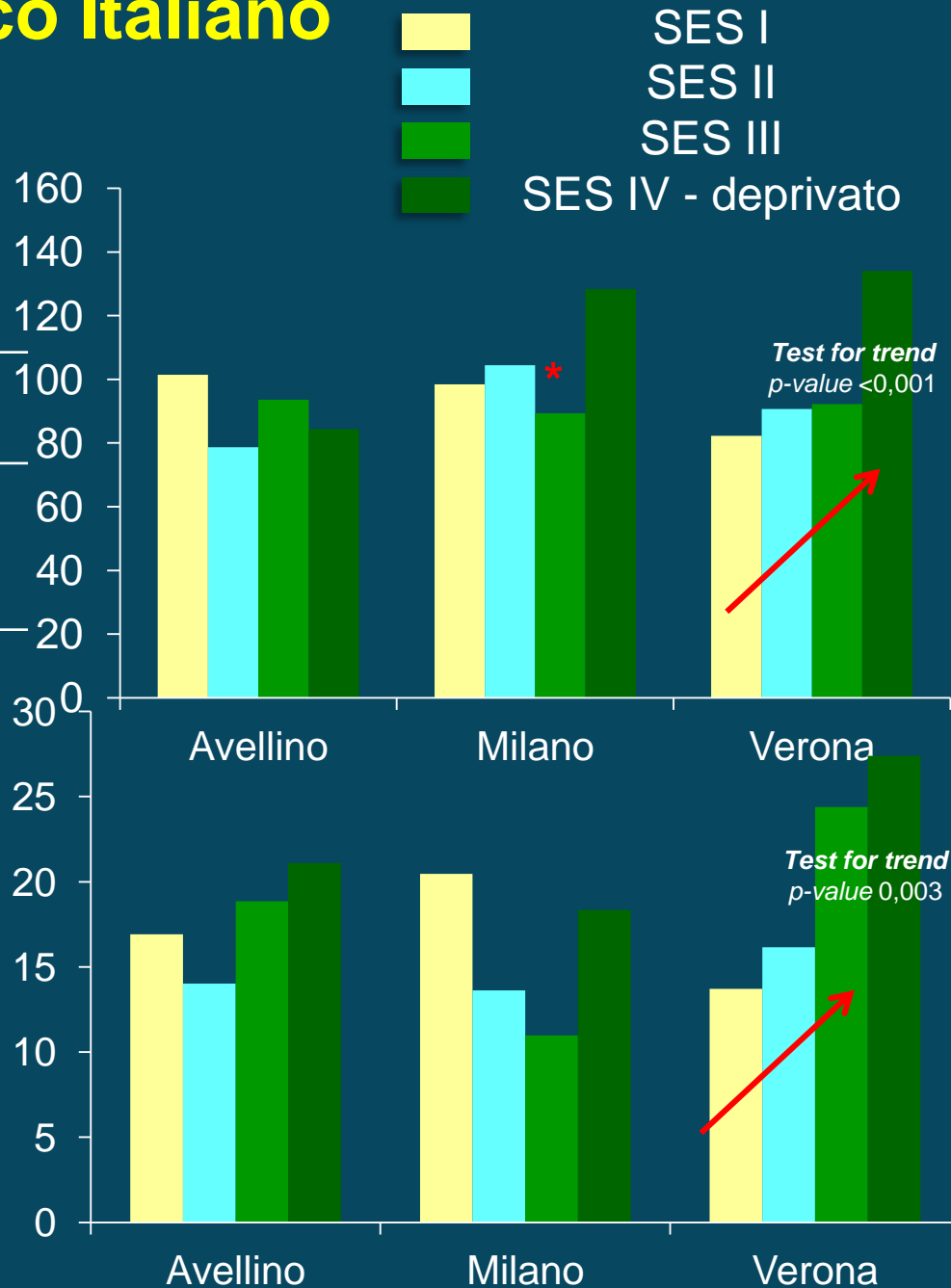
Donisi et al., 2011

Prevalenza

	Tasso per 10.000	(95% IC)
AV	86,96	(79,46-94,45)
MI	104,15	(97,89-110,41)
VR	100,24	(94,06-106,42)

Incidenza

	Tasso per 10.000	(95% IC)
AV	16,13	(12,89-19,84)
MI	14,47	(12,12-16,81)
VR	22,13	(19,22-25,05)





PERGAMON

Social Science & Medicine 49 (1999) 425-433

SOCIAL SCIENCE & MEDICINE

Effects of distances to hospital and GP surgery on hospital inpatient episodes, controlling for needs and provision

Robin Haynes^{a,*}, Gra

^aSchool of Environment
^bSchool of Health Policy



WHO Collaborating Centre

DSPMC - PSY

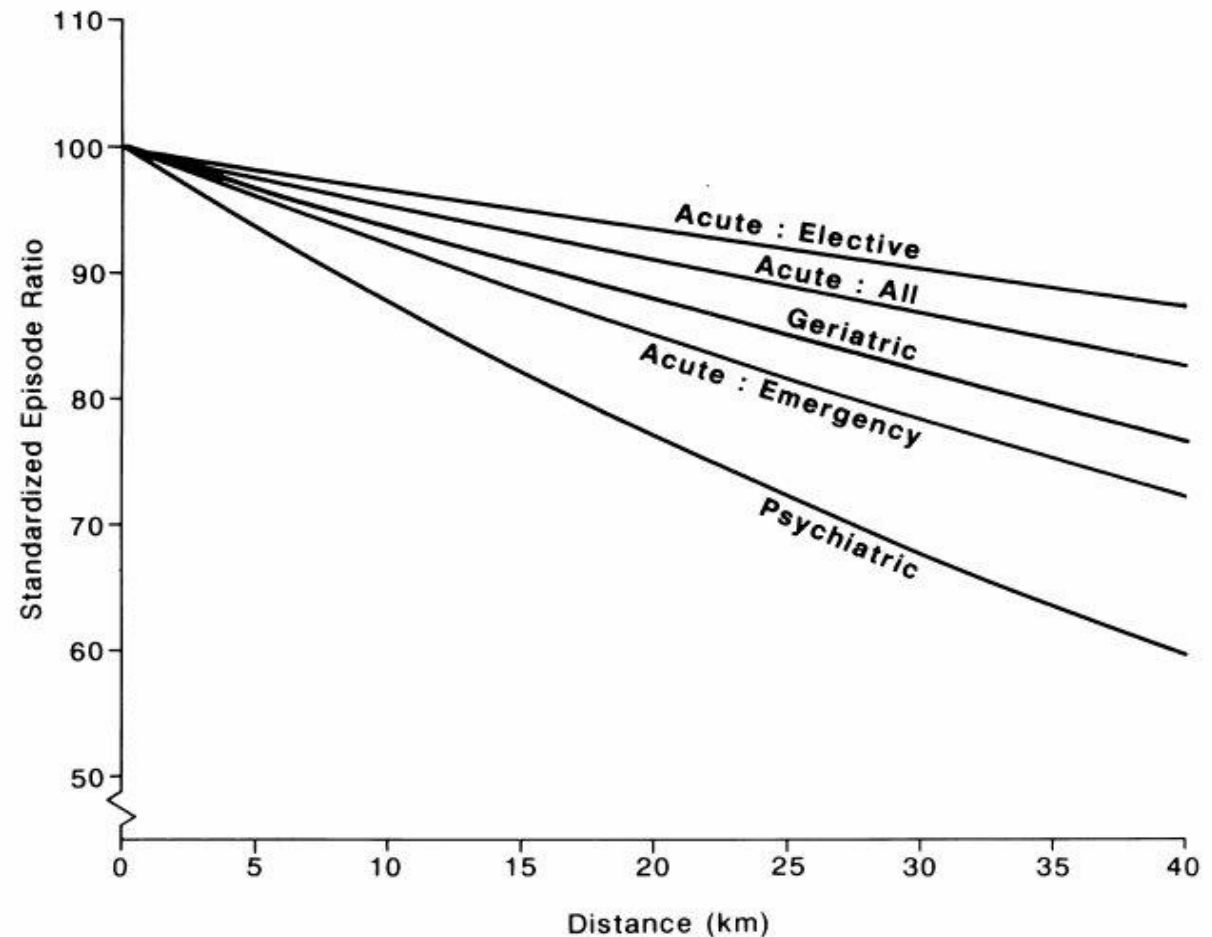


Fig. 1. Effects of distance to hospital on inpatient episodes, controlling for needs and provision

How are caseload and service utilisation of psychiatric services influenced by distance? A geographical approach to the study of community-based mental health services

Grazia Zulian · Valeria Donisi · Giacomo Secco ·
Riccardo Pertile · Michele Tansella ·
Francesco Amaddeo

Received: 22 January 2009 / Accepted: 11 June 2010 / Published online: 26 June 2010
© Springer-Verlag 2010

Abstract

Introduction The aim of this study was to assess how the caseload and the utilisation of community-based mental health services is influenced by distance and to socioeco-

Results The facilities were not equally located in the catchment areas. Of particular significance, rural areas appear to be poorly served by mental health services. The distance decay effect exists, with different trends for the three types of



WHO
Collaborating
Centre

DSPMC - PSY

Distanza e Network Area Function



WHO
Collaborating
Centre

DSPMC - PSY

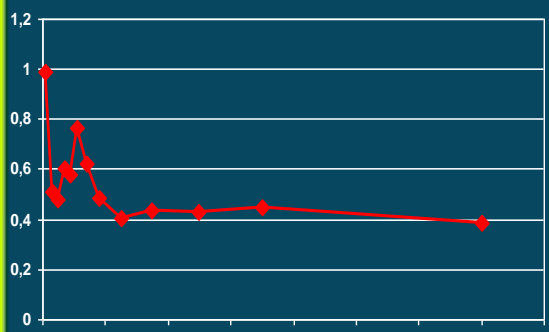
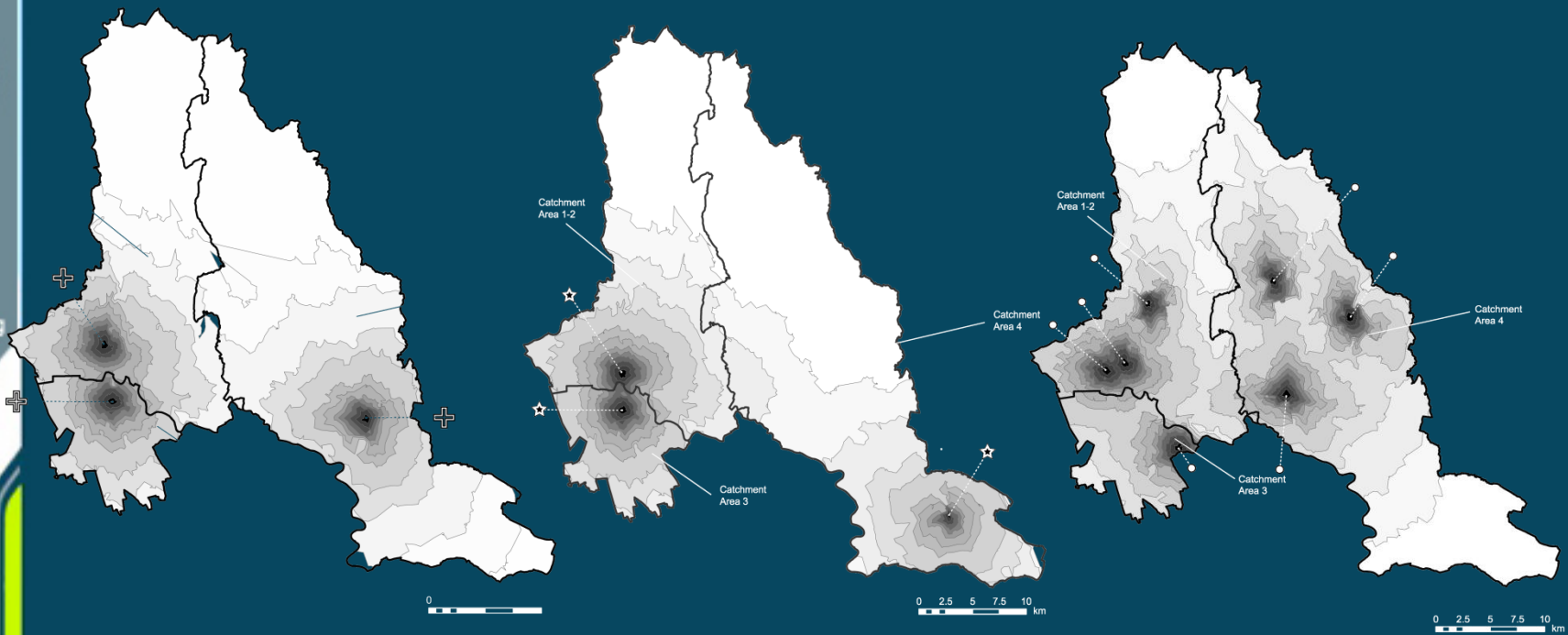




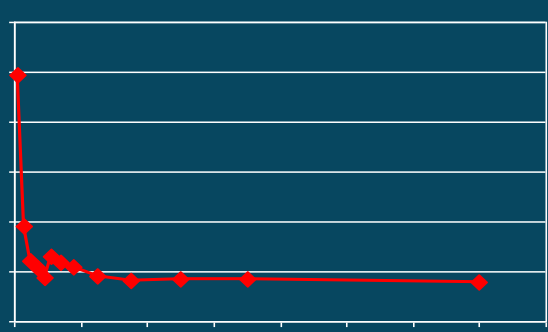
WHO
Collaborating
Centre

DSPMC - PSY

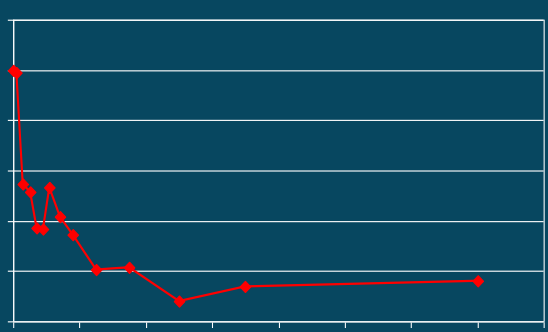
Aree di impedenza e utilizzazione dei servizi



SPDC



Centri di Salute Mentale



Servizi ambulatoriali

NOVITA'



Caratteristiche del territorio

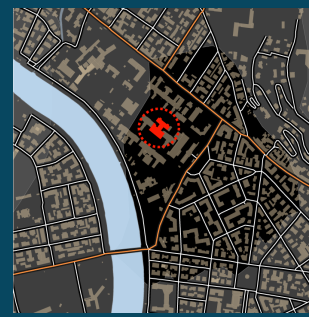
Status Socio-economico dell'area

E' stato costruito un indice di status socio-economico (SES):

- Base Nazionale
- 336.788 sezioni di censimento (SC)
- 9 variabili del censimento



E' stata messa a punto una metodologia per misurare la disponibilità/accessibilità di servizi pubblici di base, servizi sanitari, economici, culturali, ricreativi ed educativi



Distanza calcolata lungo la rete di viabilità stradale

Distanza dai servizi





WHO
Collaborating
Centre

DSPMC - PSY

PROGETTI
FUTURI

REFINEMENT

RE-search on FIN-ancing systems' E-ffect on the Quality of MENT-al health care

Specific Programme "Cooperation" – Theme
"Health"

Call identifier: FP7-HEALTH-2010-single-stage

Duration: 36 months

COORDINATORE:

Professor Francesco Amaddeo

Dipartimento di Sanità Pubblica e Medicina di Comunità

Sezione di Psichiatria e Psicologia Clinica

Unità di Ricerca: Registro Psichiatrico dei Casi, Epidemiologia, Geografia ed
Economia della Salute Mentale

Partners

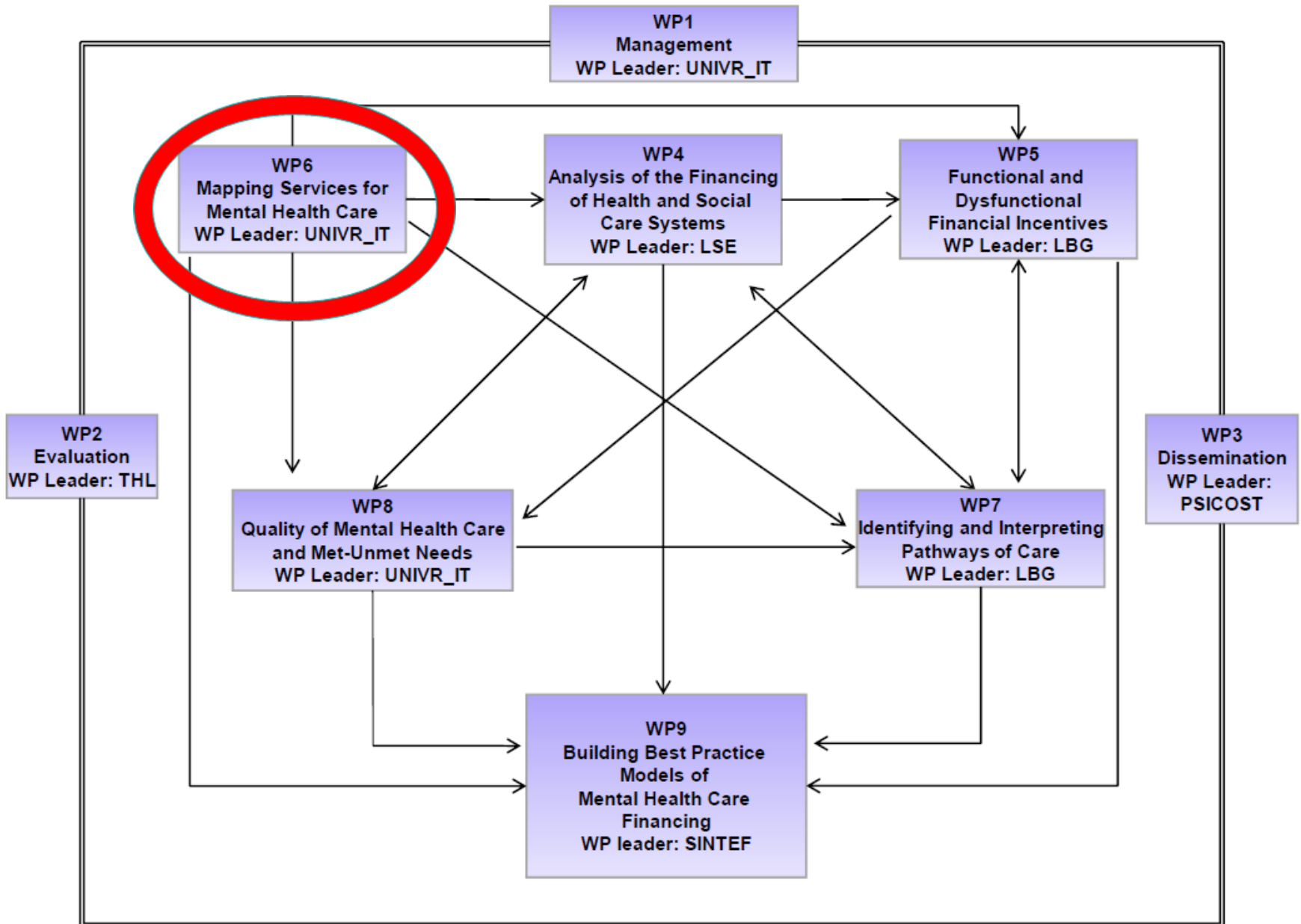
Beneficiary Number	Beneficiary name	Country
1(coordinator)	UNIVERSITA' DEGLI STUDI DI VERONA	ITALY
2	LUDWIG BOLTZMANN GESELLSCHAFT	AUSTRIA
3	LONDON SCHOOL OF ECONOMICS AND POLITICAL SCIENCE	UK
4	TERVEYDEN JA HYVINVOINNIN LAITOS	FINLAND
5	ASOCIACION CIENTIFICA PSICOST	SPAIN
6	STIFTELSEN SINTEF	NORWAY
7	UNIVERSITY OF TARTU	ESTONIA
8	UNIVERSITE PARIS XII - VAL DE MARNE	FRANCE
9	INSTITUTUL DE PROGNOZA ECONOMICA	ROMANIA



WHO
Collaborating
Centre

DSPMC - PSY

Pert Diagram showing the interdependencies of the REFINEMENT Work Packages

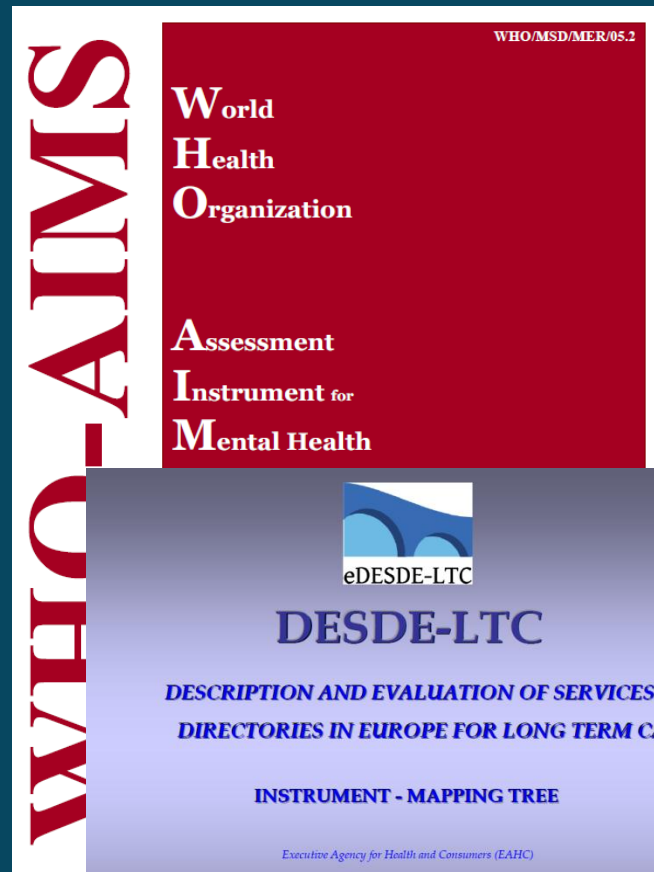
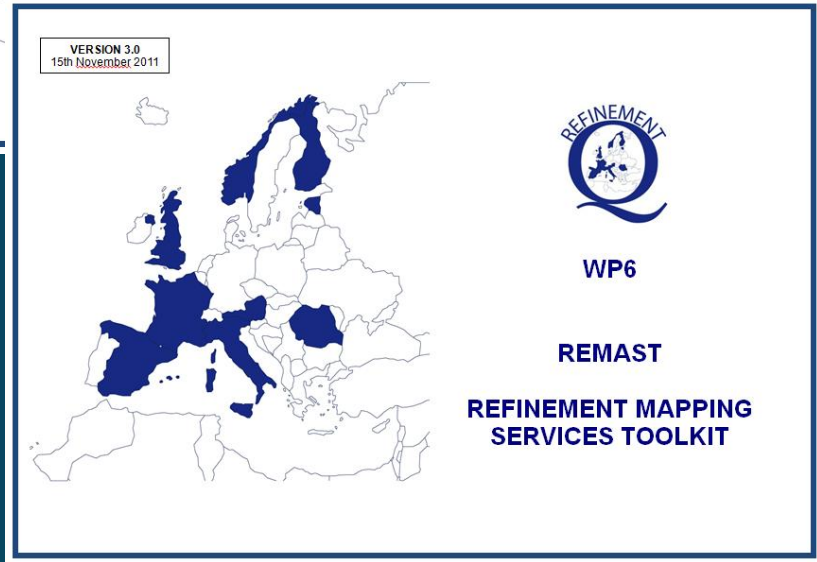
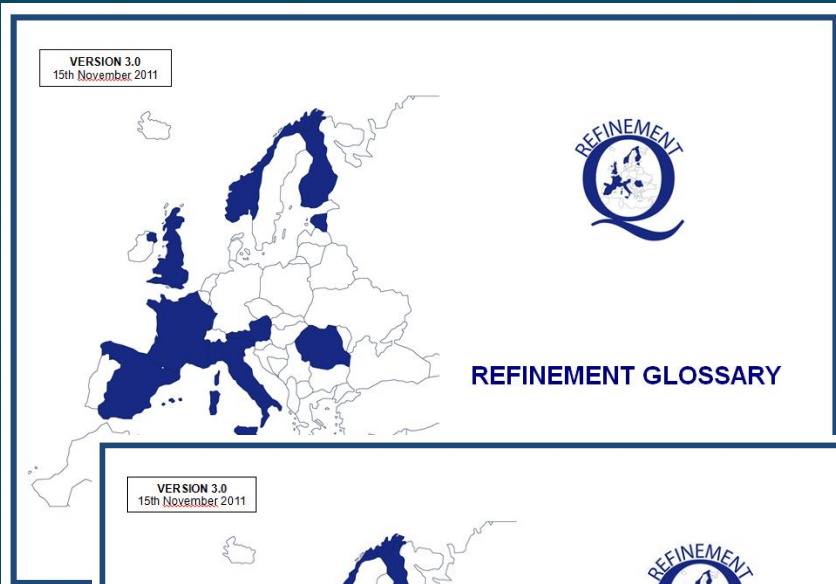


Gli strumenti utilizzati



WHO
Collaborating
Centre

DSPMC - PSY



IL REMAST

- Dati della Popolazione
- Strumento “Services Inventory”
- Strumento “Mental Health Services: Policies and Description”
- Risorse e Dati Geografici
- Verona SES Index

REFINEMENT WPG REMAST - Verona SES Index

VERONA SES INDEX

*** Please attach to this toolkit one or more files with the detailed datasets.**

	Macro-Area		Study Area*	
Single-parent families <small>Number of single-parent families with children / number of families</small>	<input type="text"/>	UN	<input type="text"/>	UN
Workers employed in each working sector <small>Number of economically active individuals employed in each working sector / economically active individuals employed and unemployed</small>	<input type="text"/>	UN	<input type="text"/>	UN
Rented accommodation <small>Number of occupied rented accommodation / occupied accommodation</small>	<input type="text"/>	UN	<input type="text"/>	UN
Individuals with Elementary School level <small>Number of individuals with elementary school as maximum level of education / residents over 8 years old</small>	<input type="text"/>	UN	<input type="text"/>	UN

REMAST: SERVICE INVENTORY

REMAST: SERVICES INVENTORY

Click on each button to compile the “Services Inventory” section of the REMAST. Each button corresponds to a specific set of questions you can easily answer either by writing your data or by selecting the most appropriate entry from the drop-down menu. Please check the SIF IDNUM for each service you are describing in the following four forms. You can compile the forms in the order you prefer, but compilation will be easier if you follow the order of the buttons.

Service Basic InformationService Data 1Service Data 2ESMS-R Code

Complessità del sistema informativo psichiatria nella Regione Veneto

- Flusso Assistenza Psichiatrica Territoriale
- Flusso Schede di Dimissione Ospedaliera
- Flusso della Farmaceutica (ricettazione)
- Flusso dell'Attività di Pronto Soccorso
- Flusso delle Schede di Morte

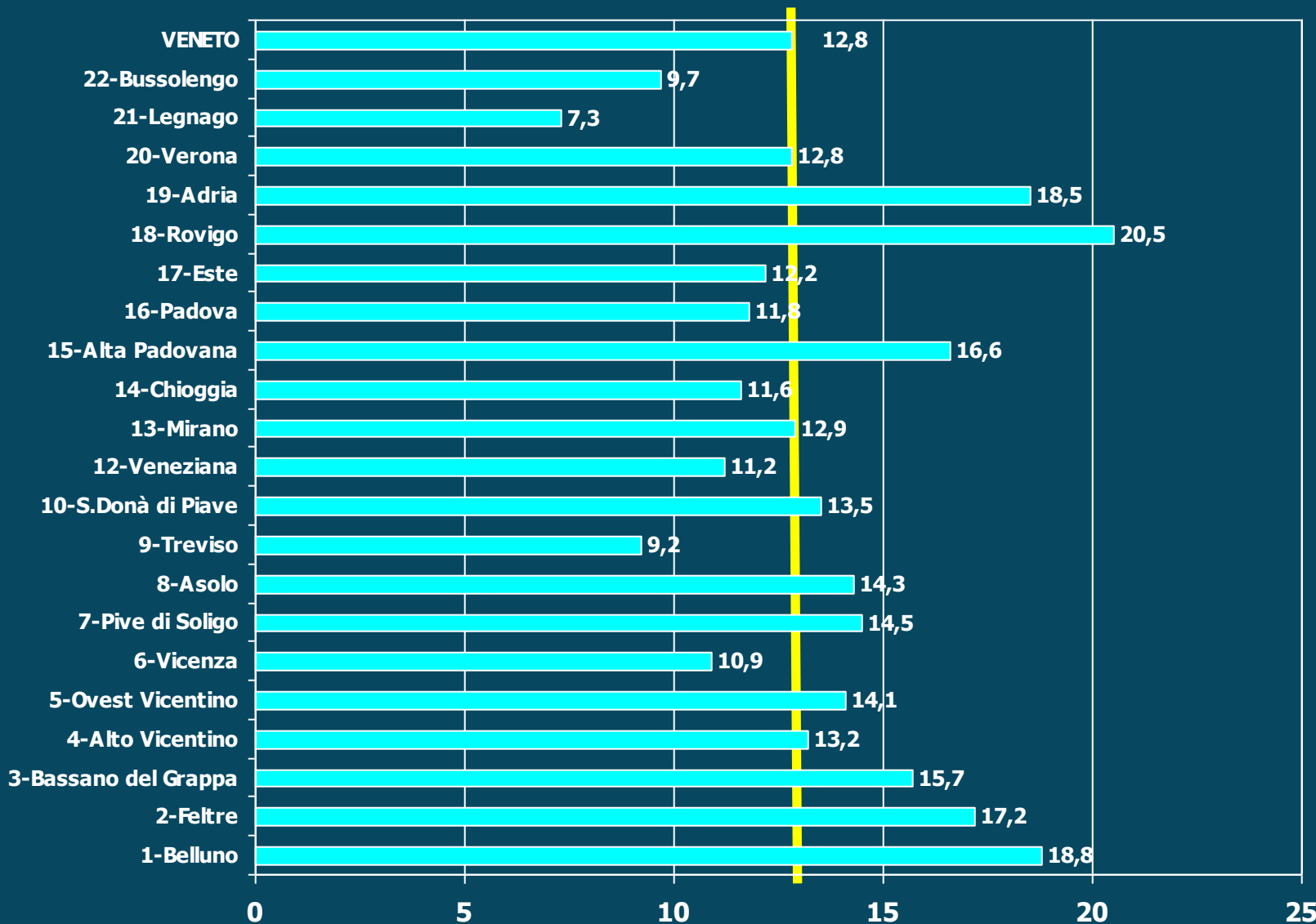


WHO
Collaborating
Centre

DSPMC - PSY

Prevalenza trattata 2007 nel Veneto per ULSS

Tassi per 1.000 abitanti



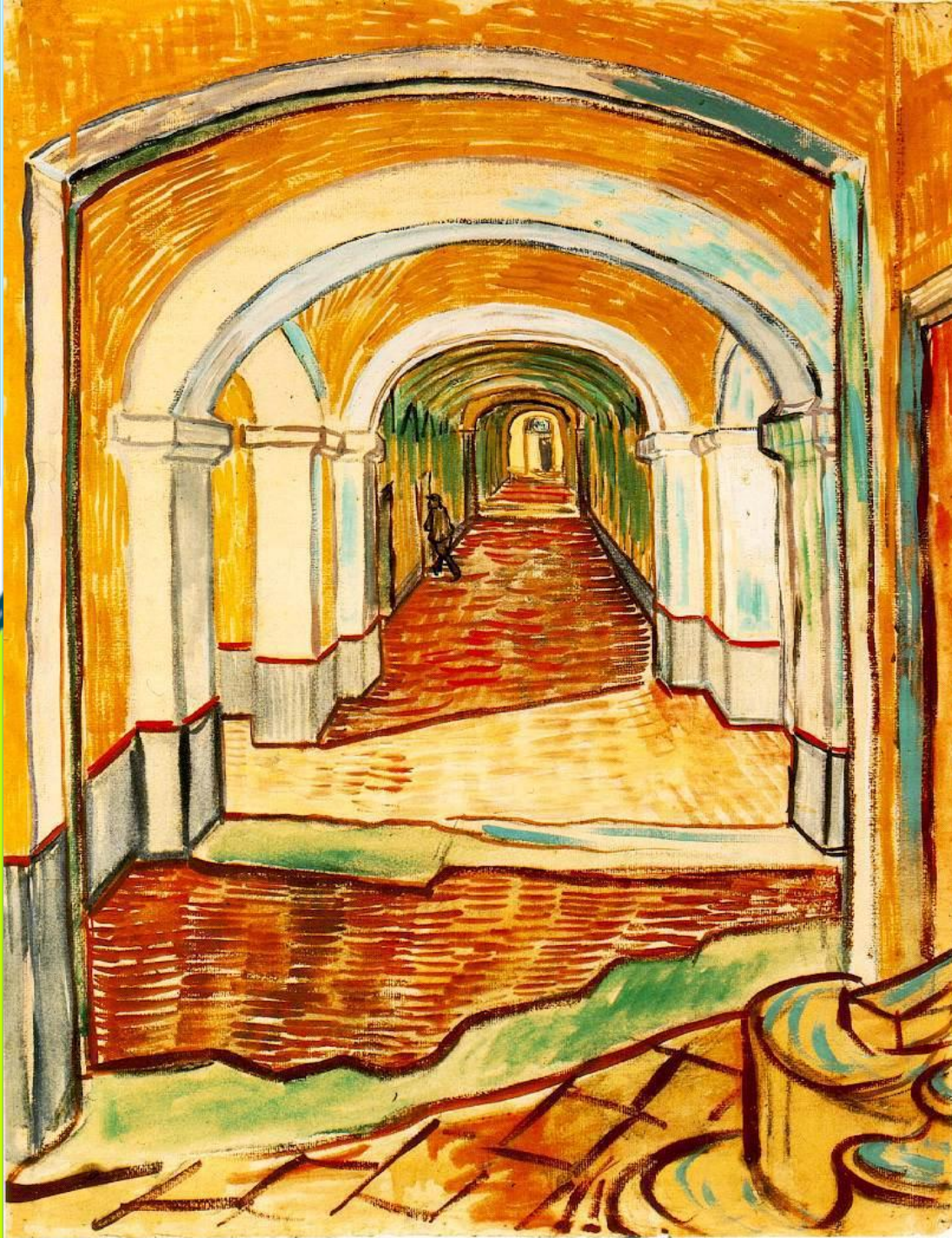
WHO
Collaborating
Centre

DSPMC - PSY



WHO
Collaborating
Centre

DSPMC - PSY



**Il corridoio del
manicomio
Van Gogh, 1889**