



**Disuguaglianze di salute: politiche sanitarie e non sanitarie**

30 maggio 2019

organizzato da

ISTITUTO SUPERIORE DI SANITÀ  
Centro Nazionale per la Salute Globale

e

ASviS – Alleanza Italiana per lo Sviluppo Sostenibile

# Contrasto alle disuguaglianze e policy ambiente e salute: *sfide in essere, azioni future e ricerca*

**Responsabile**

**Struttura di missione Sostenibilità Ambientale e Salute (DG-SAS)**

**Direzione Generale ISPRA**

**Luciana Sinisi, ISPRA**



**ISPRA**  
Istituto Superiore per la Protezione  
e la Ricerca Ambientale



**Sistema Nazionale  
per la Protezione  
dell'Ambiente**

# Presentazione

- Ambiente e disuguaglianze di salute : aree di azione e ricerca
- La vulnerabilità sociale nell' assessment europeo dell'EEA (report 2018)
- Gruppi vulnerabili e transizione epidemiologica
- Fenomeni globali come drivers delle disuguaglianze: cambiamenti climatici e migrazioni
- Agenda 2030 come opportunità: SDGs, contrasto alle disuguaglianze (target 3.4 e 3.9), ambiente ed equità (target 1.4 e 1.5)



Unequal exposure and unequal impacts: social vulnerability to air pollution, noise and extreme temperatures in Europe

ISSN 1977-8449

Figure 2.1 Impacts on well-being of the combination of vulnerability and exposure to environmental health hazards



Sources: EEA, based on IPCC (2014b), WHO Europe (2010) and Aalbers et al. (2014). The report addresses the aspects of exposure and vulnerability to a varying extent.

# Ambiente e disuguaglianze: le sfide

## 1. Caratterizzazione della vulnerabilità socio-economica:

**environmental justice** (distributiva/ geografica)

Inclusione nella sorveglianza epidemiologica ambientale, nella valutazione e gestione rischi e impatti sulla salute da fattori ambientali



Review

### Environmental Justice in Industrially Contaminated Sites. A Review of Scientific Evidence in the WHO European Region

Roberto Pasetto<sup>1,2,\*</sup>, Benedetta Mattioli<sup>3</sup> and Daniela Marsili<sup>1,2</sup>

<sup>1</sup> Department of Environment and Health, National Institute of Health, 00161 Rome, Italy;

<sup>2</sup> WHO Collaborating Centre for Environmental Health in Contaminated Sites, National Institute of Health, 00161 Rome, Italy

<sup>3</sup> National Centre for Global Health, National Institute of Health, 00161 Rome, Italy; benedetta.mattioli@iss.it

\* Correspondence: roberto.pasetto@iss.it; Tel.: +39-06-4990-2851

Received: 5 February 2019; Accepted: 14 March 2019; Published: 19 March 2019



## I nuovi scenari epidemiologici

### Sensibilità e suscettibilità gruppi vulnerabili

**"Procedural justice"**: partecipazione al decision making che realizza le condizioni di rischio:

- Accesso all'informazione, partecipazione
- "Ability to cope"

## 2. DRIVERS E SCENARI GLOBALI



- 3.4 Entro il 2030, **ridurre di un terzo la mortalità prematura da malattie non trasmissibili** attraverso la prevenzione e la cura e promuovere la salute mentale e il benessere
- 
- 3.9 Entro il 2030, ridurre sostanzialmente il **numero di decessi e malattie da sostanze chimiche pericolose** e da inquinamento e contaminazione di aria, acqua e suolo.

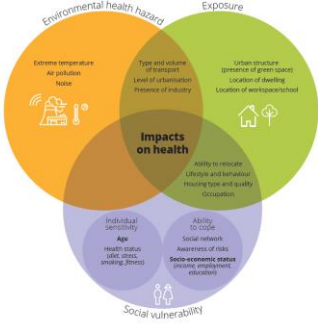
Unequal exposure and unequal impacts: social vulnerability to air pollution, noise and extreme temperatures in Europe

EEA 1071.A66



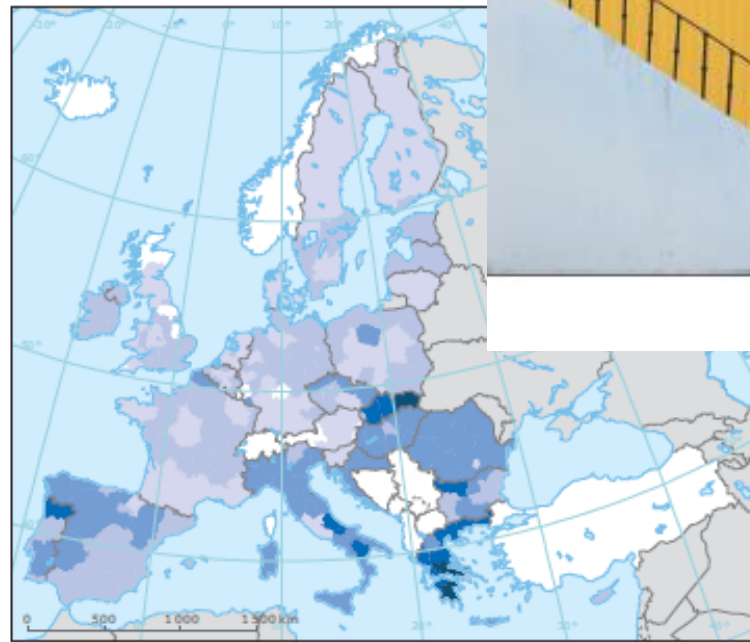
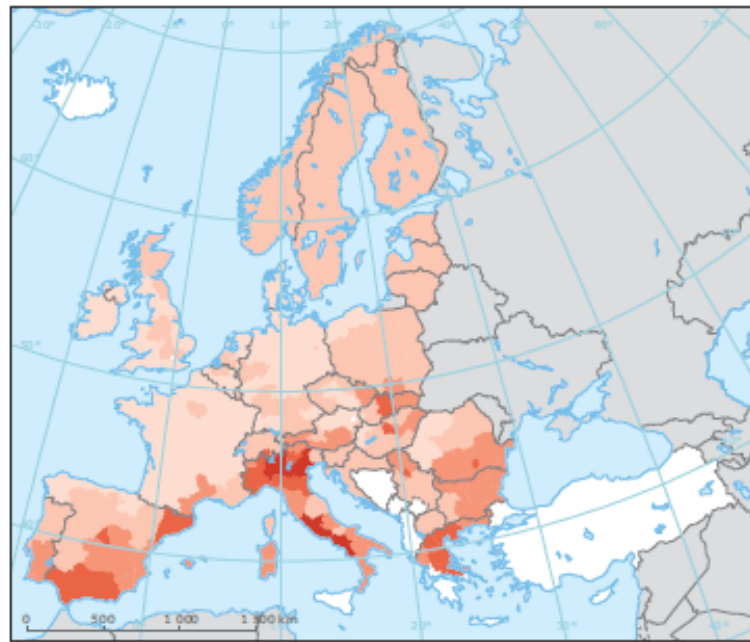
European Environment Agency

# Vulnerabilità socio economica e "giustizia ambientale". Il Rapporto dell'EEA 2018



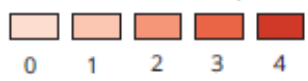
Source: EEA, based on WHO (2016), WHO Europe (2015) and Adonis et al. (2016). The report addresses the aspects of exposure and vulnerability in a general sense.

## Multiple hazards and multiple causes of vulnerability in Europe



### Multiple hazards and multiple causes of vulnerability in Europe

Number of hazards in top 20 %



Number of vulnerability causes in top 20 %



**Note:** The map presents the number of environmental health hazards or causes of vulnerability for which a given NUTS 2 region was classified in the top 20 % in Europe.

**Source:** EEA.

# La transizione epidemiologica: le malattie non trasmissibili

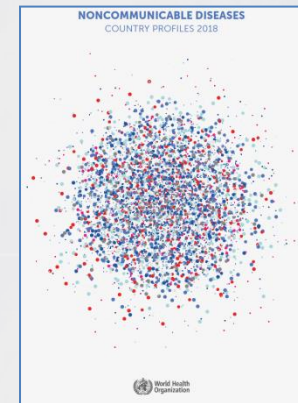


FIGURE 1: GLOBAL MORTALITY (% OF TOTAL DEATHS), ALL AGES, BOTH SEXES, 2016

- ▶ 31% Cardiovascular diseases
- ▶ 16% Cancers
- ▶ 7% Chronic respiratory diseases
- ▶ 3% Diabetes
- ▶ 15% Other NCDs
- ▶ 20% Communicable, maternal, perinatal and nutritional conditions
- ▶ 9% Injuries

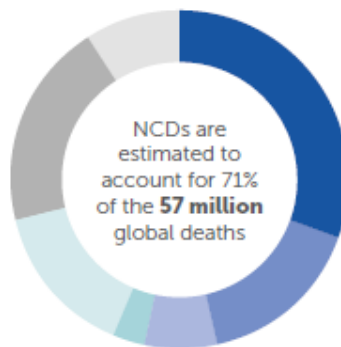
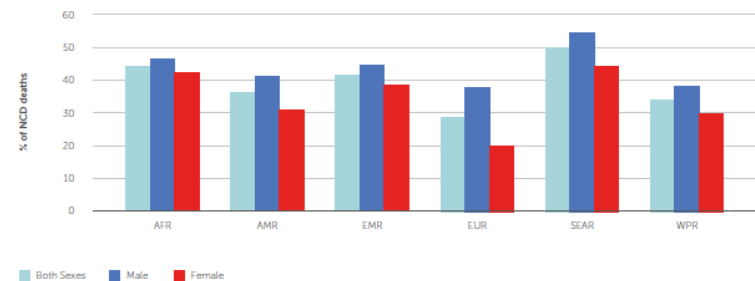


FIGURE 3: PROPORTION OF NCD DEATHS OCCURRING AMONG THOSE AGED 30 - 69 YEARS, BY WHO REGION, 2016



AFR: WHO African Region; AMR: WHO Region of the Americas; EMR: WHO Eastern Mediterranean Region; EUR: WHO European Region; SEAR: WHO South-East Asia Region; WPR: WHO Western Pacific Region.

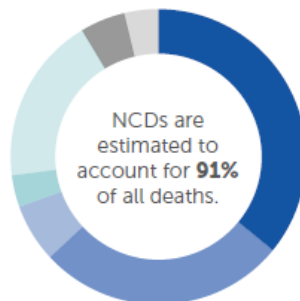
2016 TOTAL POPULATION: 59 430 000  
2016 TOTAL DEATHS: 640 000

## MORTALITA' PER MALATTIE NON TRASMISSIBILI (NCDs) nel mondo e in Italia (WHO 2018)

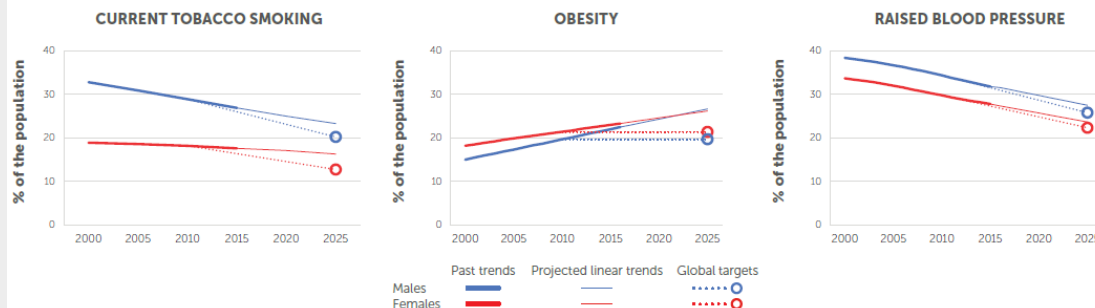
### ITALY

#### PROPORTIONAL MORTALITY

- ▶ 36% Cardiovascular diseases
- ▶ 27% Cancers
- ▶ 6% Chronic respiratory diseases
- ▶ 3% Diabetes
- ▶ 18% Other NCDs
- ▶ 5% Communicable, maternal, perinatal and nutritional conditions
- ▶ 4% Injuries

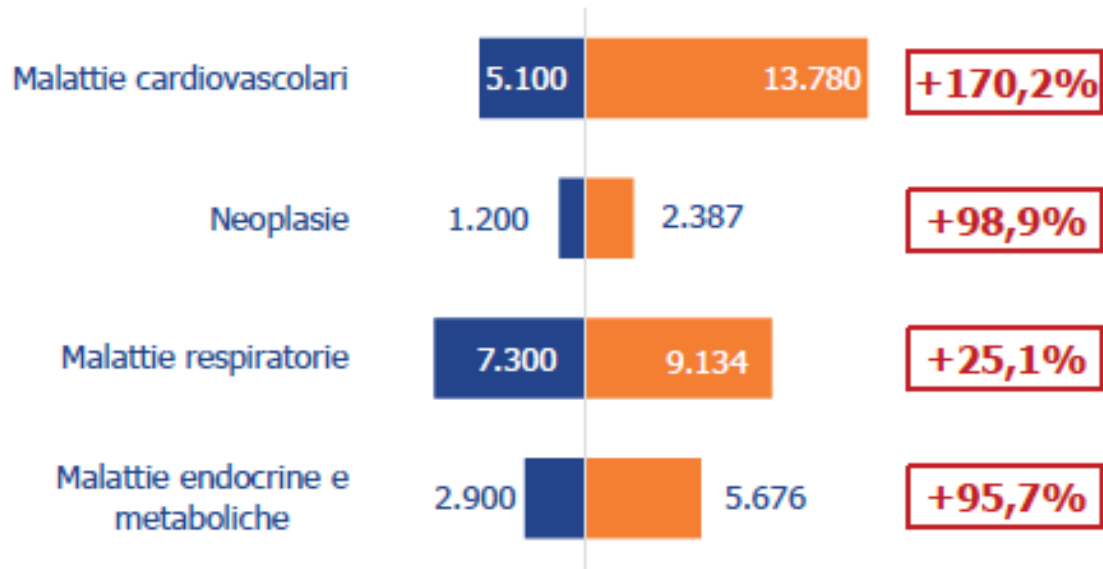


#### SELECTED ADULT RISK FACTOR TRENDS

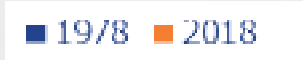




# Stessa transizione epidemiologica anche in Italia : fattori ambientali?

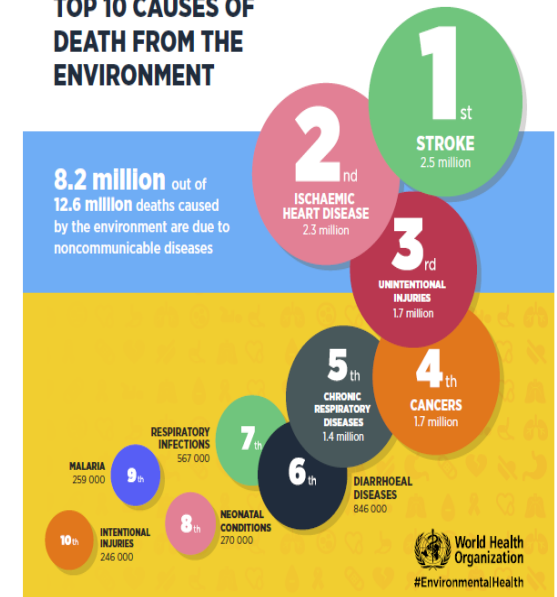


Prevalenza standardizzata su 100.000



Impacts from the environment on noncommunicable diseases

## TOP 10 CAUSES OF DEATH FROM THE ENVIRONMENT



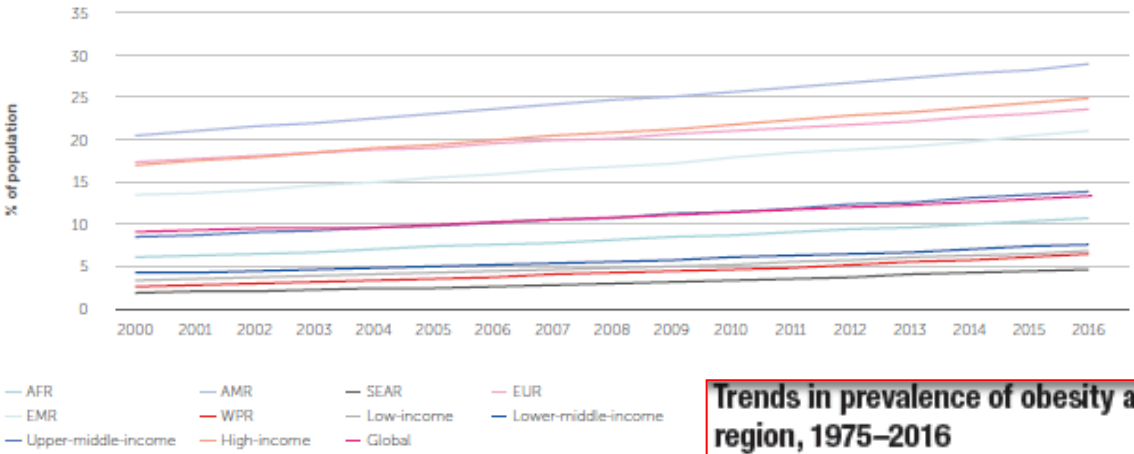
Fonte: The European House – Ambrosetti su dati Eurostat, Istat e ISS, 2018

	< 5 anni	5 - 14 anni	15-49 anni	50-69 anni	> 70 anni
1°	Neoplasie (4,3%)	Neoplasie (34,1%)	Neoplasie (36,9%)	Neoplasie (53,9%)	Malattie cardiovascolari (38,6%)
2°	Diabete, malattie metaboliche e malattie del sangue (3,4%)	Diabete, malattie metaboliche e malattie del sangue (7,3%)	Malattie cardiovascolari (14,6%)	Malattie cardiovascolari (21,5%)	Neoplasie (23,2%)
3°	Disturbi Neurologici (2,7%)	Malattie cardiovascolari (4,6%)	Cirrosi epatiche (4,8%)	Diabete, malattie metaboliche e malattie del sangue (5,1%)	Disturbi neurologici (17,5%)

Principali tre malattie non trasmissibili per mortalità e per fasce di età in Italia (% del totale), 2016

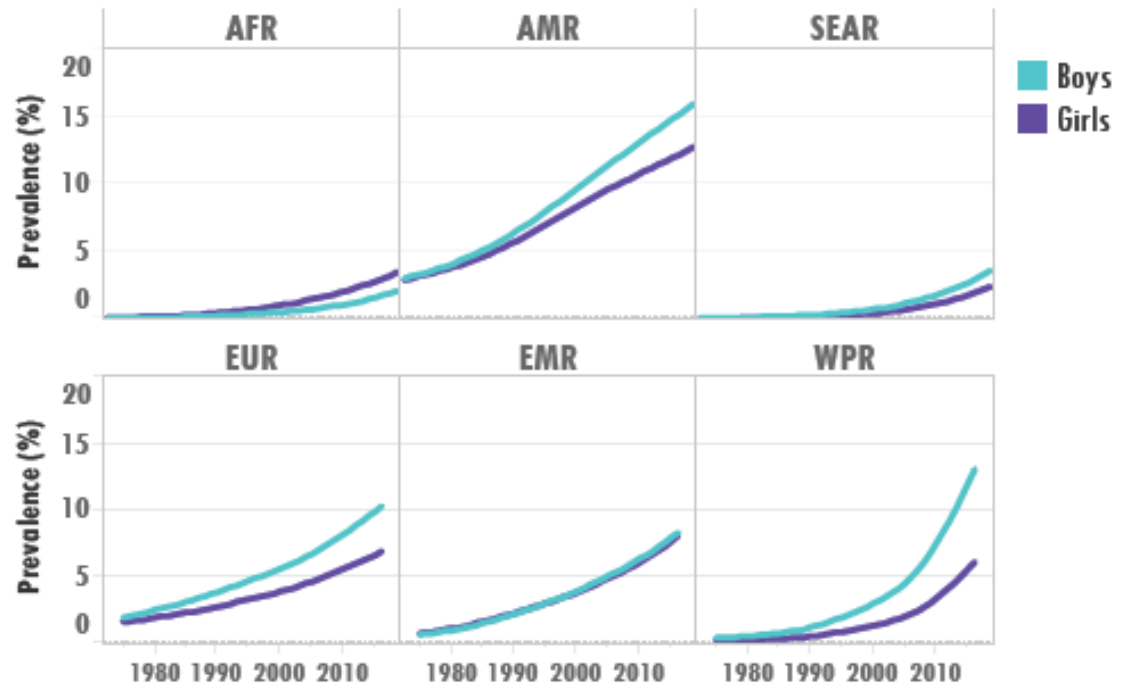
Fonte: The European House – Ambrosetti su dati Global Burden of Disease, 2018

FIGURE 5: PERCENTAGE OF ADULTS WITH A BODY MASS INDEX (BMI) OF 30 KG/M<sup>2</sup> OR HIGHER, BY WHO REGION AND WORLD BANK INCOME GROUP, 2000–2016



AFR: WHO African Region; AMR: WHO Region of the Americas; EMR: WHO Eastern Mediterranean Region; WPR: WHO Western Pacific Region.

Trends in prevalence of obesity among boys and girls aged 5–19 years, by WHO region, 1975–2016



Trend obesità nel mondo  
Adulti e bambini

Interferenti endocrini come  
obesigeni "ambientali" .....







- 1.4 Entro il 2030, assicurare che tutti gli uomini e le donne, **in particolare i poveri e i vulnerabili, abbiano uguali diritti** riguardo alle risorse economiche, **così come l'accesso** ai servizi di base, la proprietà e il controllo sulla terra e altre forme di proprietà, eredità, **risorse naturali**, adeguate nuove tecnologie e servizi finanziari, tra cui la microfinanza.
- 1.5 Entro il 2030, **costruire la resilienza dei poveri e di quelli in situazioni vulnerabili e ridurre la loro esposizione e vulnerabilità ad eventi estremi legati al clima e ad altri shock e disastri economici, sociali e ambientali**

# I gruppi vulnerabili: salute ambientale dei bambini

## Impacts of European Environment & Health strategy COM(2003)338 final adopted 11 June 2003

### Key elements:

- SCALE (Science, Children, Awareness Raising, Legal instruments, Evaluation)
- Integrated approach
- JE&H information, cycle of chemicals, research, E&H concerns into other sectoral policies, intervention,
- Objectives: reduce disease burden, strengthen

### Focus on children:

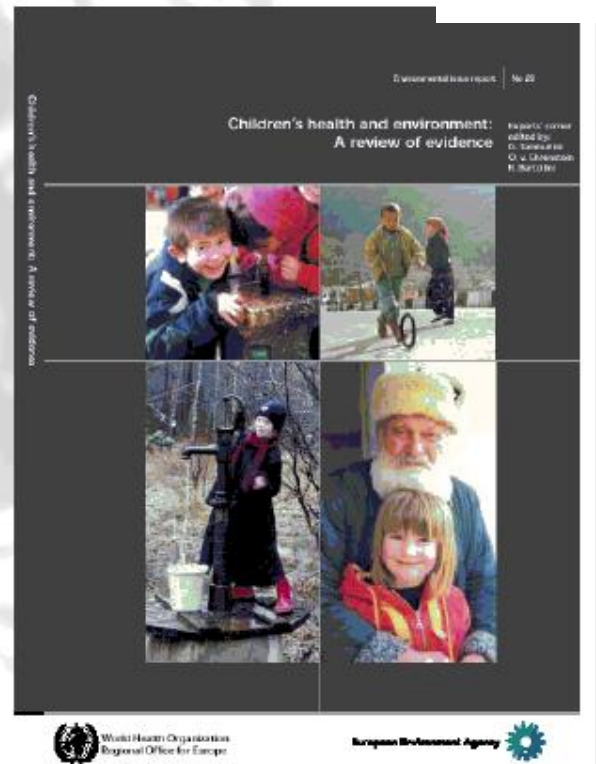
- Childhood resp. diseases, asthma, allergia
- neurodevelopmental disorders
- childhood cancer
- endocrine disrupting effects
- Accessing countries



**Fourth Ministerial Conference on Environment and Health**  
Budapest, Hungary, 23–25 June 2004



**Fifth Ministerial Conference on Environment and Health**  
"Protecting children's health in a changing environment"  
Parma, Italy, 10–12 March 2010



**Fourth Ministerial Conference on Environment and Health**  
Budapest, Hungary, 23–25 June 2004



**Children's Environment and Health Action Plan for Europe**

Working paper

EUR05400402017 18 April 2006 ORIGINAL - English



# Salute ambientale dei bambini e SDGs

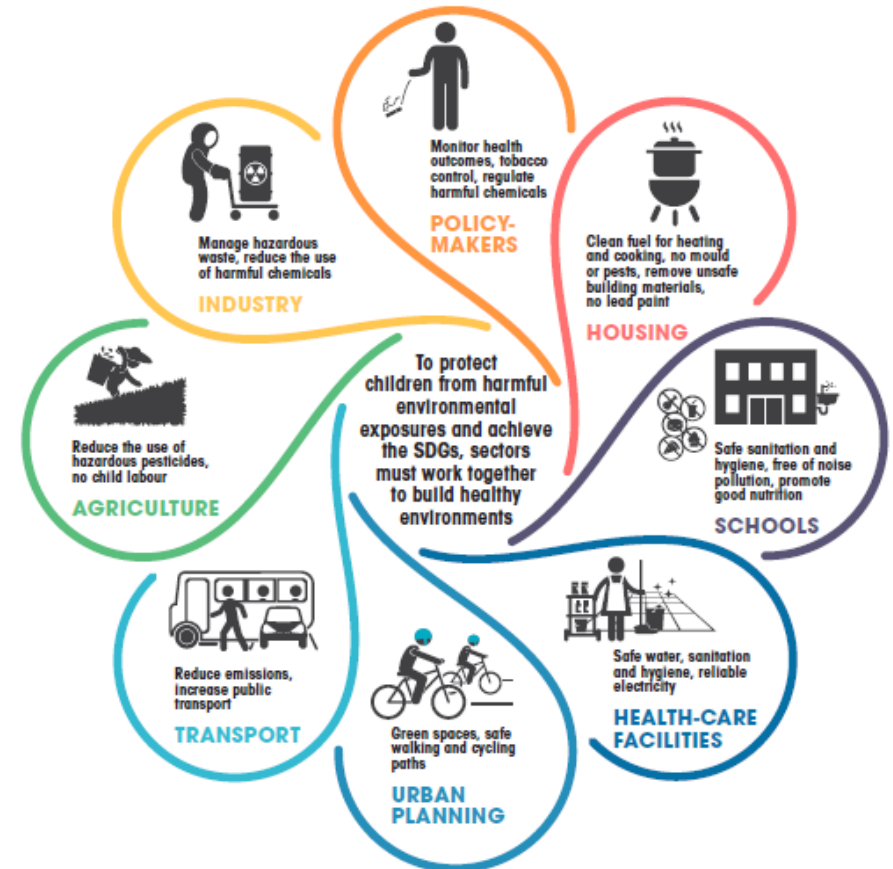
## Inheriting a sustainable world?

### Atlas on children's health and the environment



# Healthy environments for children: Key to achieving the Sustainable Development Goals

Every Sustainable Development Goal has the potential to impact the development of healthy environments for children.





# DRIVERS GLOBALI

## Number of Climate-related Disasters Around the World (1980-2011)



**3455**  
FLOODS



**2689**  
STORMS



**470**  
DROUGHTS



**395**  
EXTREME TEMPS



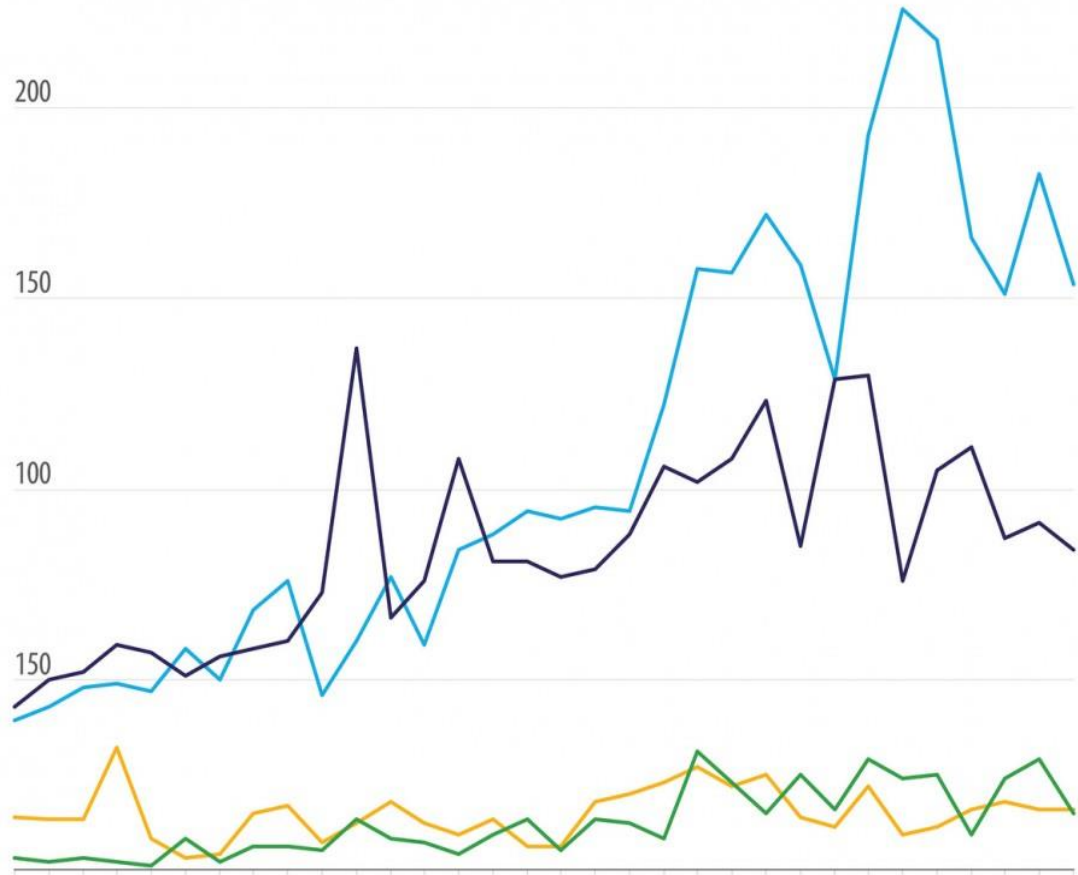
The United Nations Office for Disaster Risk Reduction  
<http://www.unisdr.org>

Created on 13 June 2012

DATA SOURCES

EM-DAT - <http://www.emdat.be/> - The OFDA/CRED International Disaster Database: Data version: 13 June 2012 - v12.07

Humanitarian Symbol Set (2006):  
<http://www.unisdr.org/map/guideline.php>



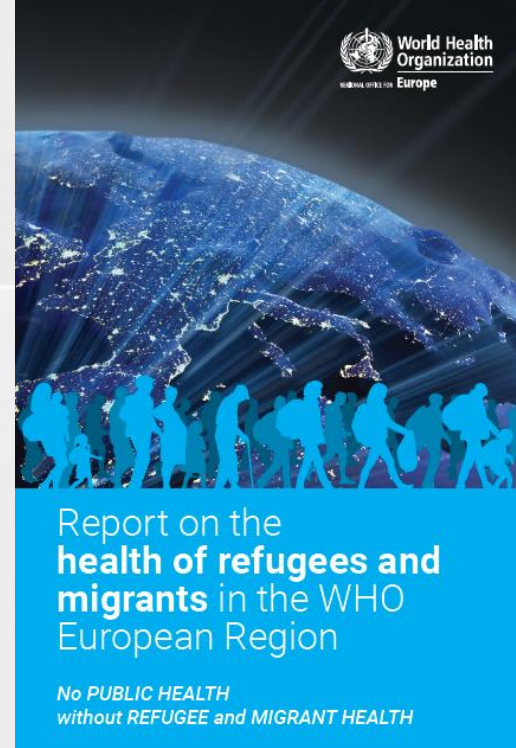
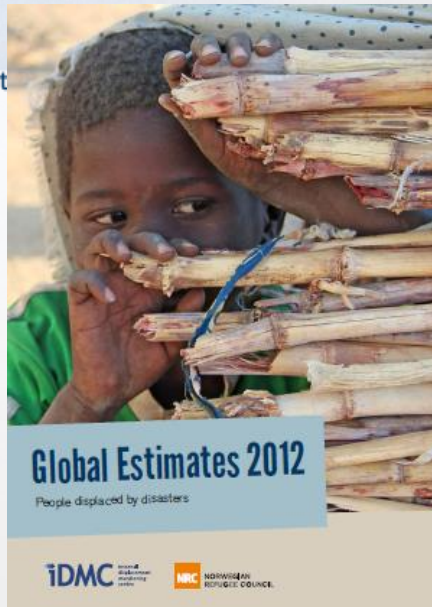
Year	FLOOD	STORM	DROUGHT	EXTREME TEMPERATURE
1980	39	43	14	3
1981	43	50	13	2
1982	48	52	13	3
1983	49	59	32	2
1984	47	57	8	1
1985	58	51	3	8
1986	50	56	4	2
1987	68	58	15	6
1988	76	60	17	6
1989	46	73	7	5
1990	60	137	12	13
1991	77	66	18	8
1992	59	76	12	7
1993	84	108	9	4
1994	88	81	13	9
1995	94	81	6	13
1996	92	77	6	5
1997	95	79	18	13
1998	94	88	20	12
1999	122	106	23	8
2000	158	102	27	31
2001	157	108	22	23
2002	172	123	25	15
2003	159	85	22	25
2004	129	129	11	16
2005	193	130	22	29
2006	226	76	9	24
2007	218	105	11	25
2008	166	111	16	9
2009	151	87	16	24
2010	183	91	16	29
2011	154	84	16	15



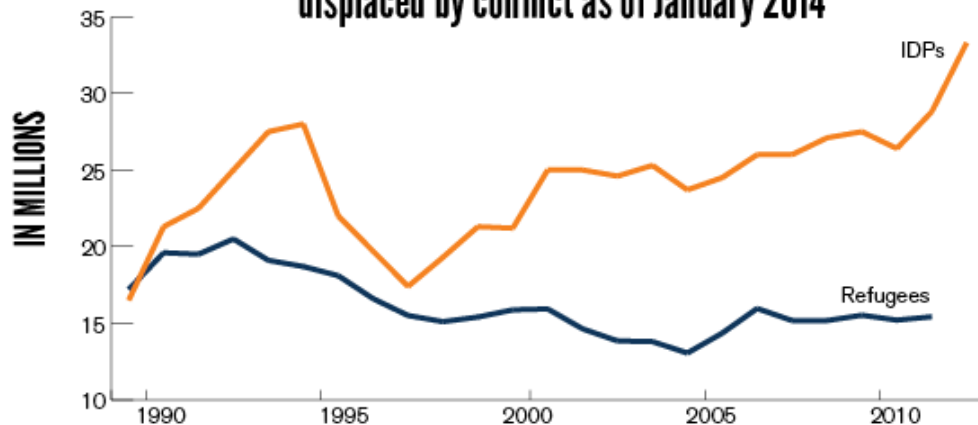
**Climate Change,  
Health, and Equity:**  
Opportunities for Action

# DRIVERS GLOBALI

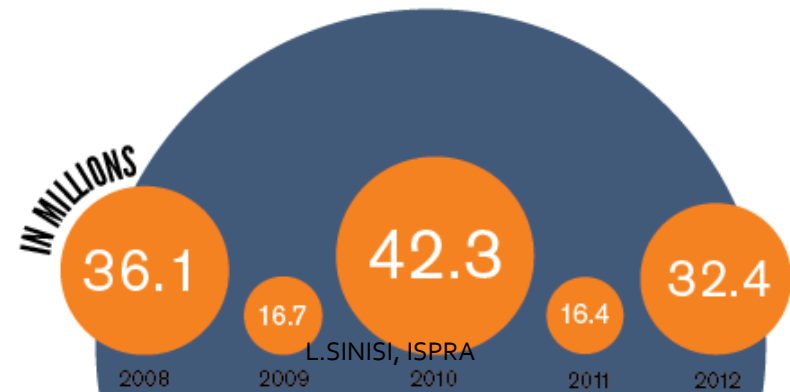
**IDMC** internal displacement monitoring centre



**33.3 million people**  
displaced by conflict as of January 2014



**143.9 million people**  
newly displaced by disasters between 2008 and 2012







[Luciana.sinisi@isprambiente.it](mailto:Luciana.sinisi@isprambiente.it)