



Osservatorio
Demenze
ISTITUTO SUPERIORE DI SANITÀ



SAPIENZA
UNIVERSITÀ DI ROMA

DEMENTIA IN MIGRANTS LIVING IN ITALY: PROMOTING A DIVERSITY-SENSITIVE CLINICAL APPROACH AND PROVISION OF CARE

Rome, March 27th, 2026

Organized by

ISTITUTO SUPERIORE DI SANITÀ
Centro Nazionale per la Prevenzione delle Malattie e la
Promozione della Salute
and
SAPIENZA UNIVERSITÀ DI ROMA
Dipartimento Neuroscienze Umane

<https://immidem.it>

D/EP/Leazio
Dipartimento di Epidemiologia SSR
Regione Lazio • ASL Roma 1

C Ospedale Luigi Sacco
Polo ospedaliero

Sistema Socio Sanitario
Regione
Lombardia
ASST Fatebenefratelli Sacco

A nationwide survey of Italian Centers for Cognitive Disorders and Dementia on the provision of care for international migrants

Ilaria Bacigalupo



CENTRO NAZIONALE
PREVENZIONE DELLE MALATTIE
E PROMOZIONE DELLA SALUTE

Istituto Superiore di Sanità

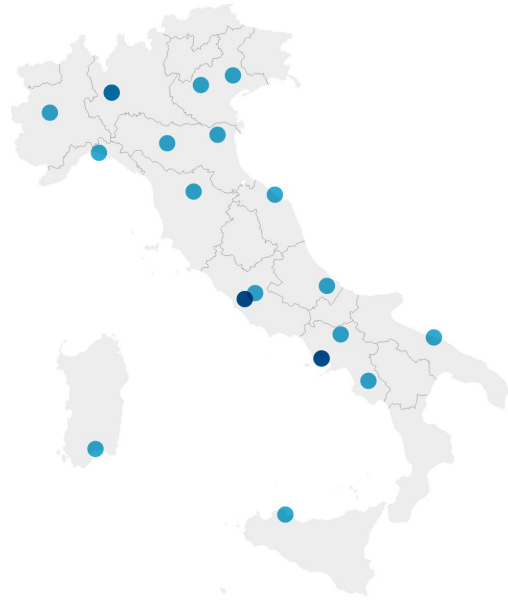
NATIONWIDE SURVEY OF CENTERS FOR COGNITIVE DISORDERS AND DEMENTIA (CCDDs)



1

An online questionnaire was designed to collect information on:

- the number of migrants referred to CCDDs in 2019;
- the main complexities encountered in their clinical assessment;
- the adopted cognitive tools
- possible barriers and



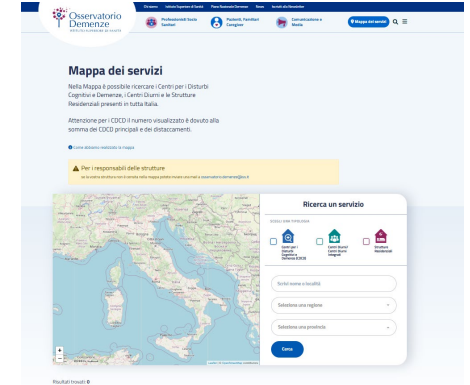
2

The questionnaire was tested in a pilot survey addressed to a representative sample of 24 Italian CCDDs to make sure that the instructions and questions were clear to the respondents.



3

Two focus groups involving healthcare providers with experience in the field of migrants' health were conducted to discuss the findings of the pilot survey and to refine the questionnaire.

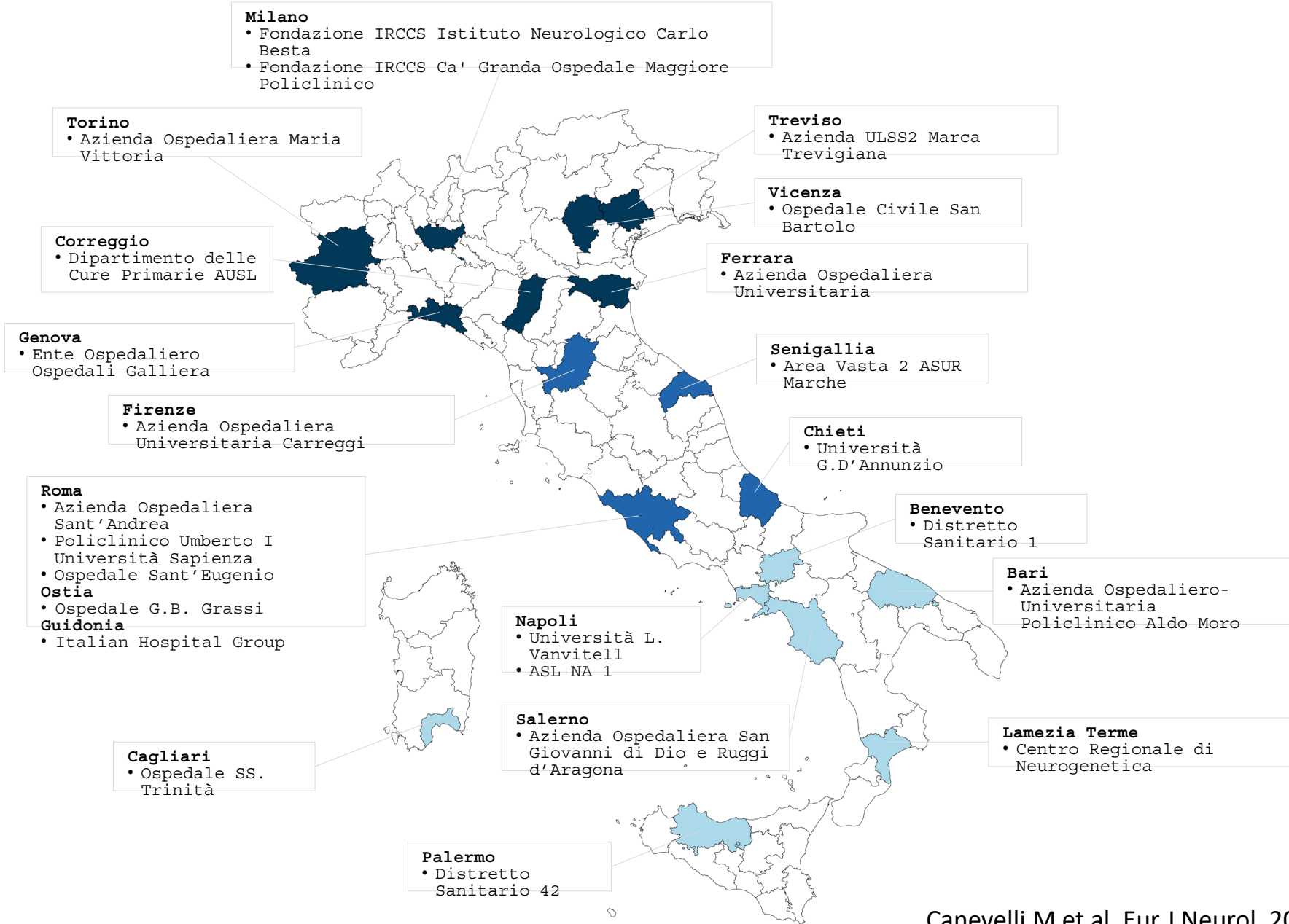


4

A link to access the online questionnaire was mailed to the available list of national CCDDs through the Dementia Observatory web-platform together with an introductory cover letter explaining the aims of the survey.

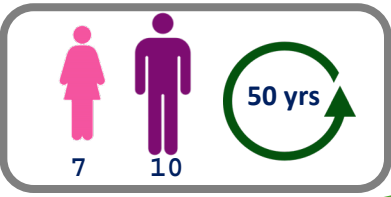
NATIONWIDE SURVEY OF CENTERS FOR COGNITIVE DISORDERS AND DEMENTIA

(CCDDs) survey

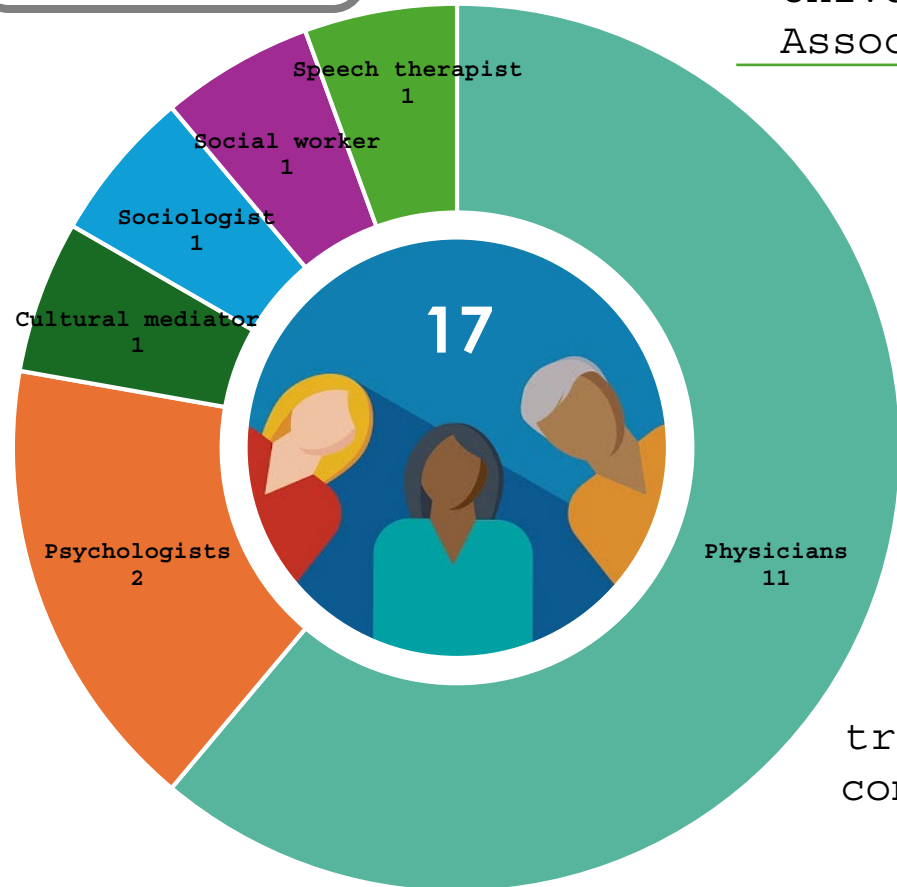


NATIONWIDE SURVEY OF CENTERS FOR COGNITIVE DISORDERS AND DEMENTIA (CCDDs)

Focus groups with healthcare professionals



Hospital 13
Territorial 2
University 1
Association 1



Topics addressed:

1. Migrants' health needs
2. Caregivers' needs
3. Healthcare professionals' needs
4. Cultural representation of dementia
5. Strengths and weaknesses in providing care for migrants
6. Improvement of care provision for migrants

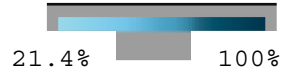
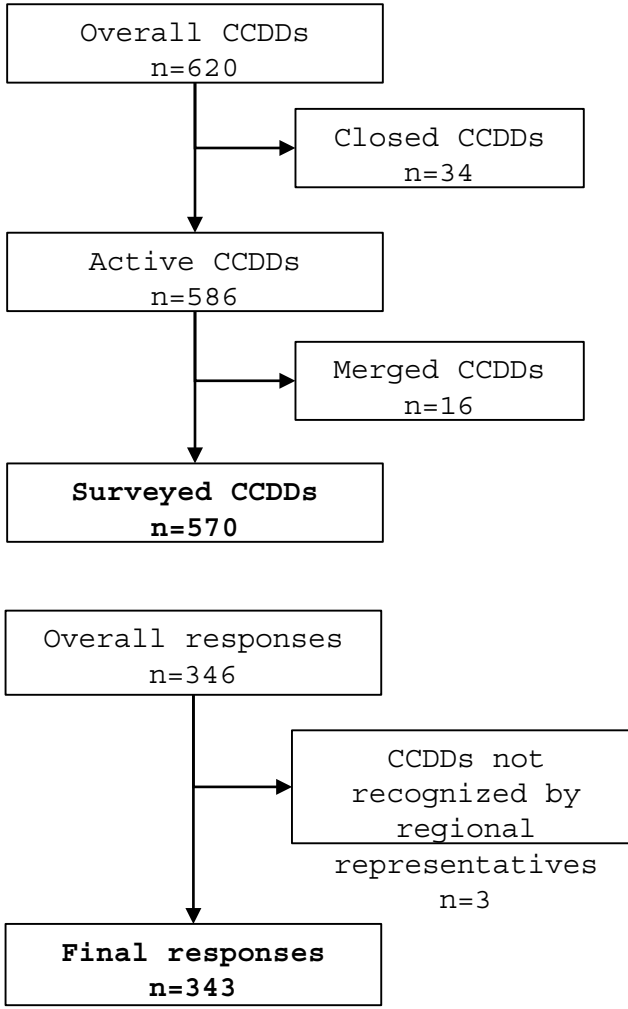
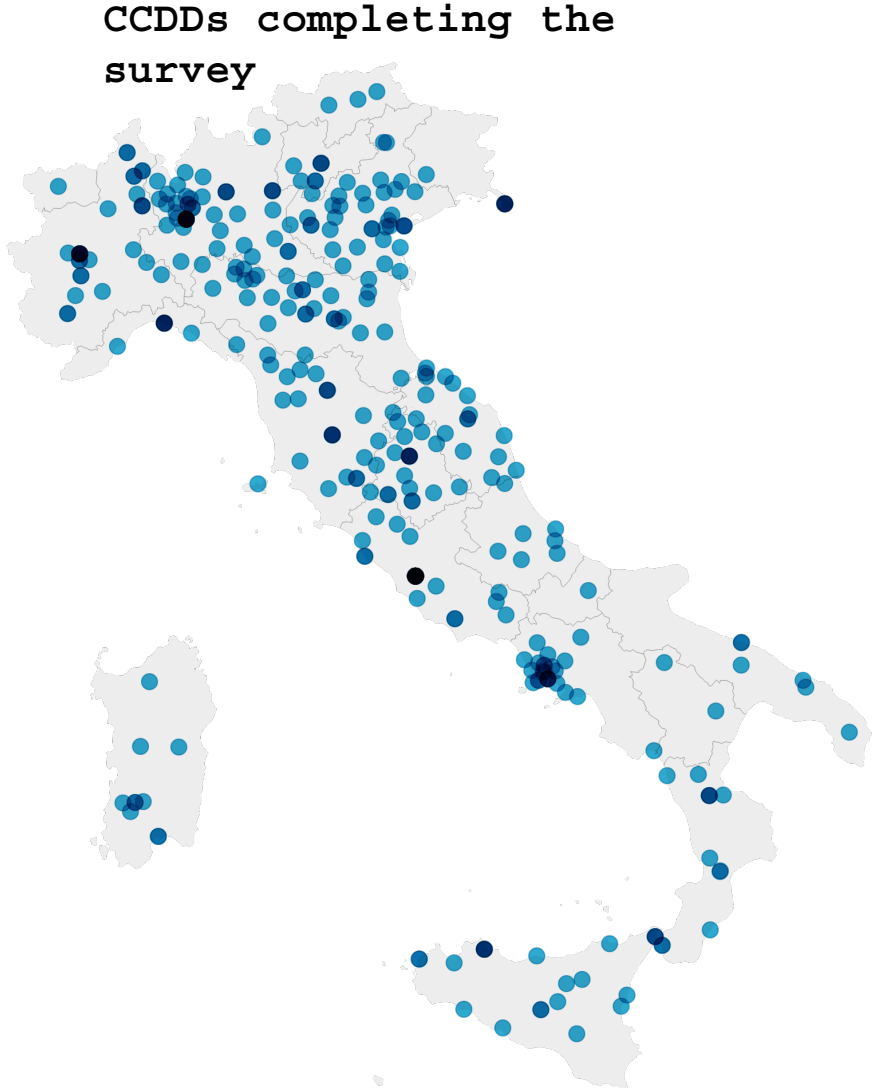
Focus Group

Audio-recorded and transcribed → informed consent of participants
60-90 min



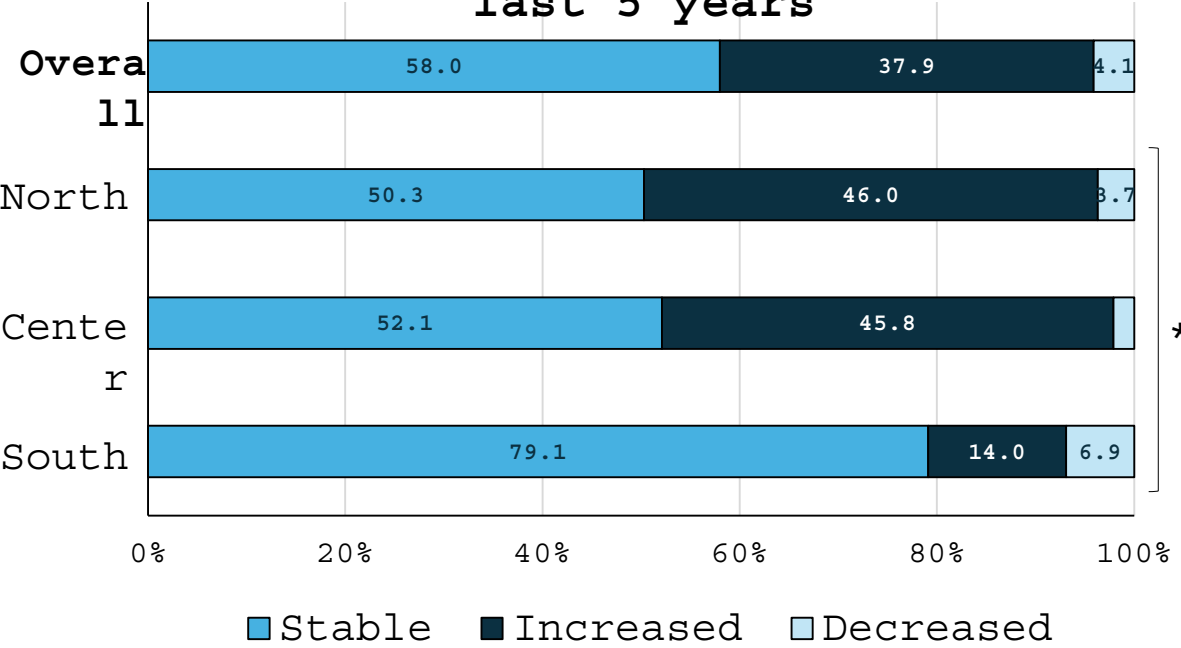
"I try with the tools I know because in this way I can find something, but a specific tool is missing [...] appropriate cognitive tools for these people [migrants]..."

NATIONWIDE SURVEY OF CENTERS FOR COGNITIVE DISORDERS AND DEMENTIA (CCDDs)

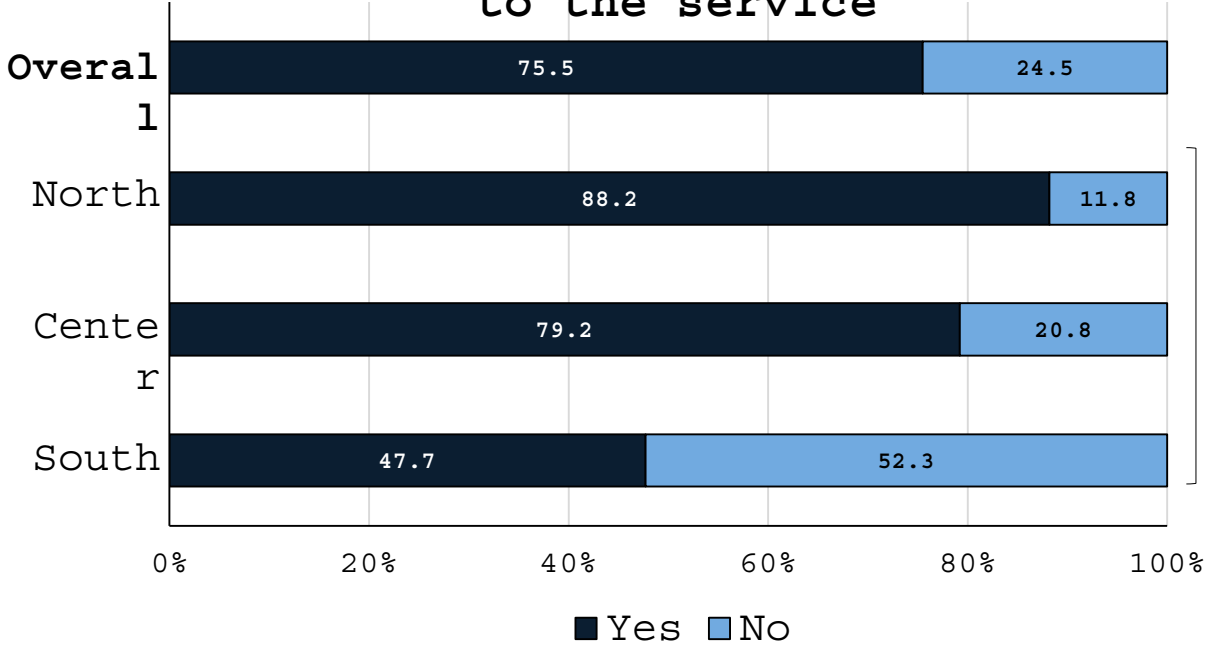


NATIONWIDE SURVEY OF CENTERS FOR COGNITIVE DISORDERS AND DEMENTIA (CCDDs)

Referrals of migrants over the last 5 years



At least one migrant referred to the service

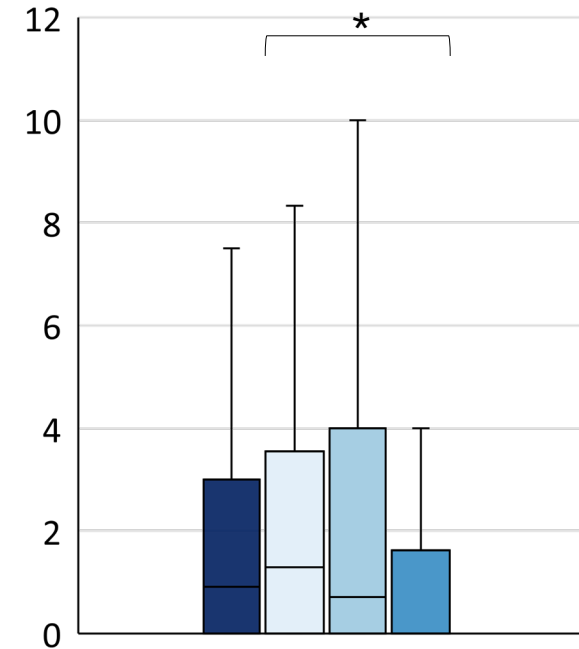
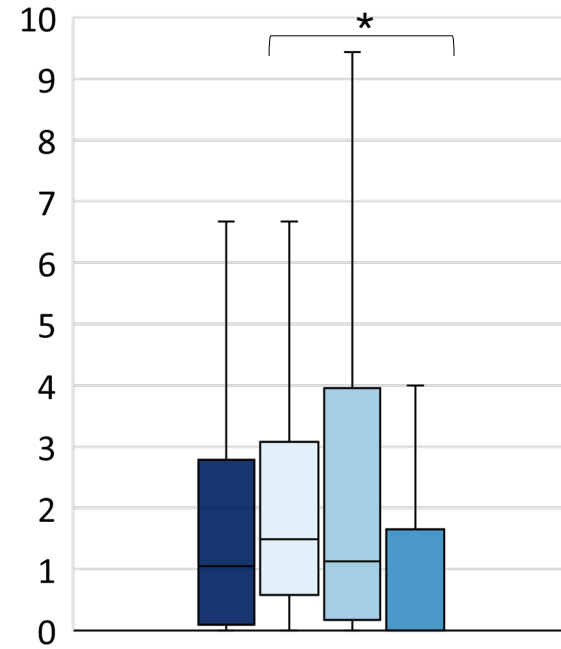
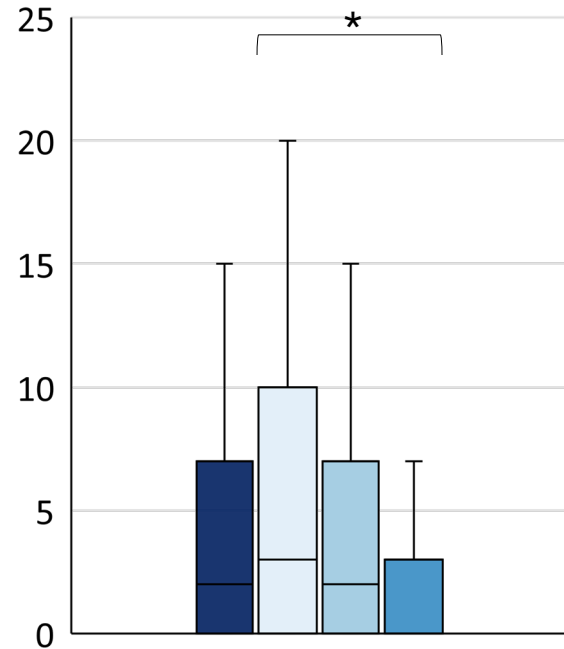
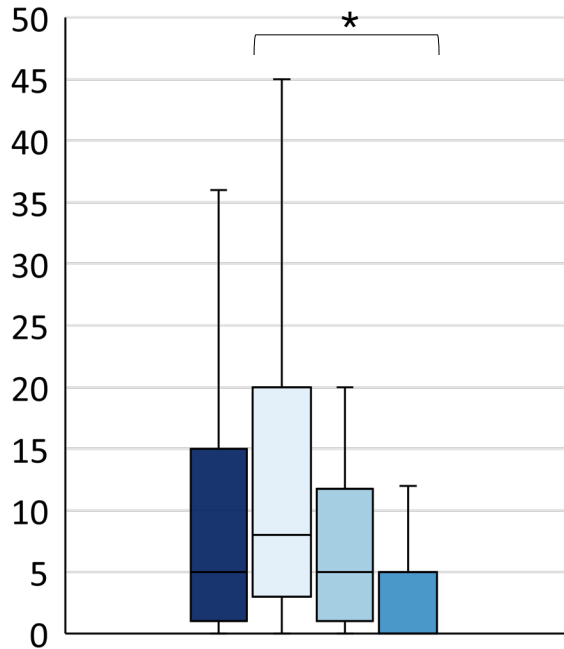


*p<0.001 (chi-square test)

NATIONWIDE SURVEY OF CENTERS FOR COGNITIVE DISORDERS AND DEMENTIA (CCDDs)

Referrals of migrants in 2019 at the surveyed CCDDs, by geographic macro-area

Total: 4,527 migrants referred to CCDDs; 2,040 migrants performing a neuropsychological assessment

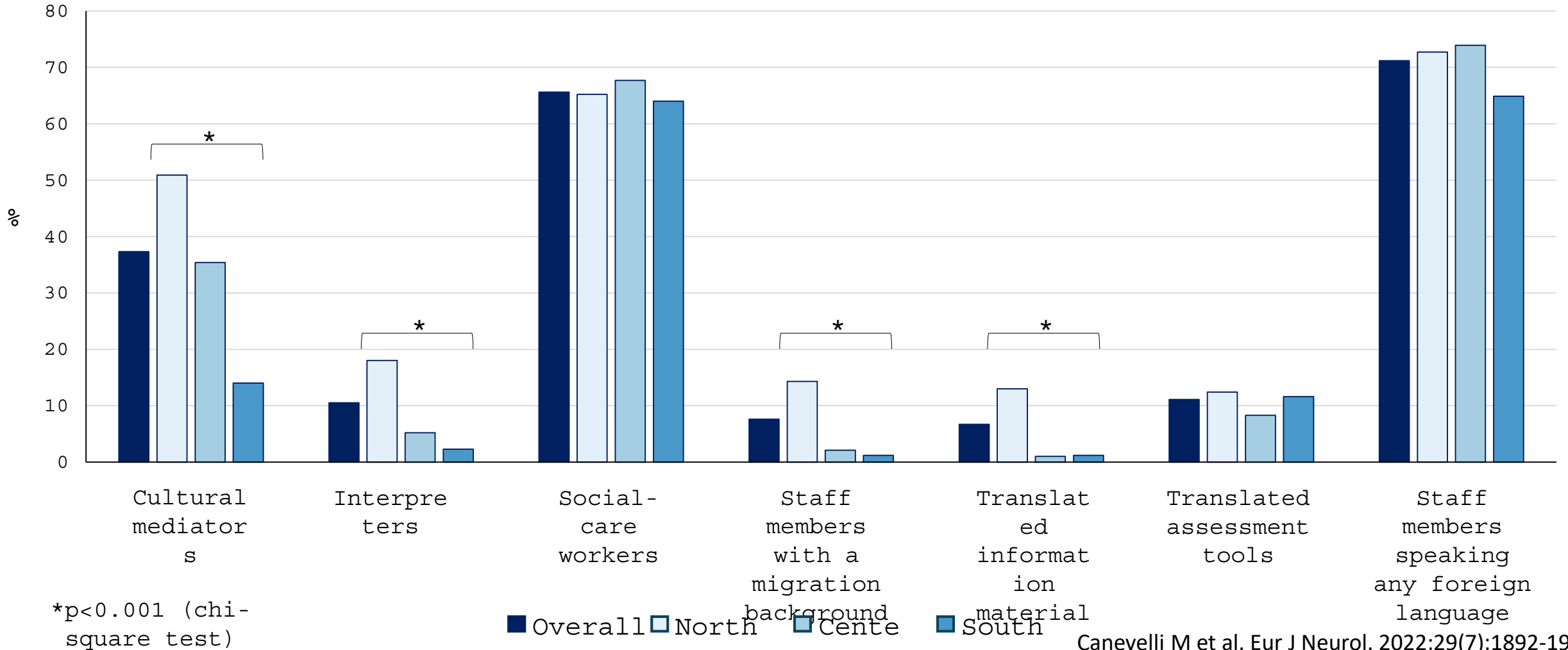


*p<0.001 (Kruskal-Wallis test)

Overall
 North
 Center
 South

NATIONWIDE SURVEY OF CENTERS FOR COGNITIVE DISORDERS AND DEMENTIA (CCDDs)

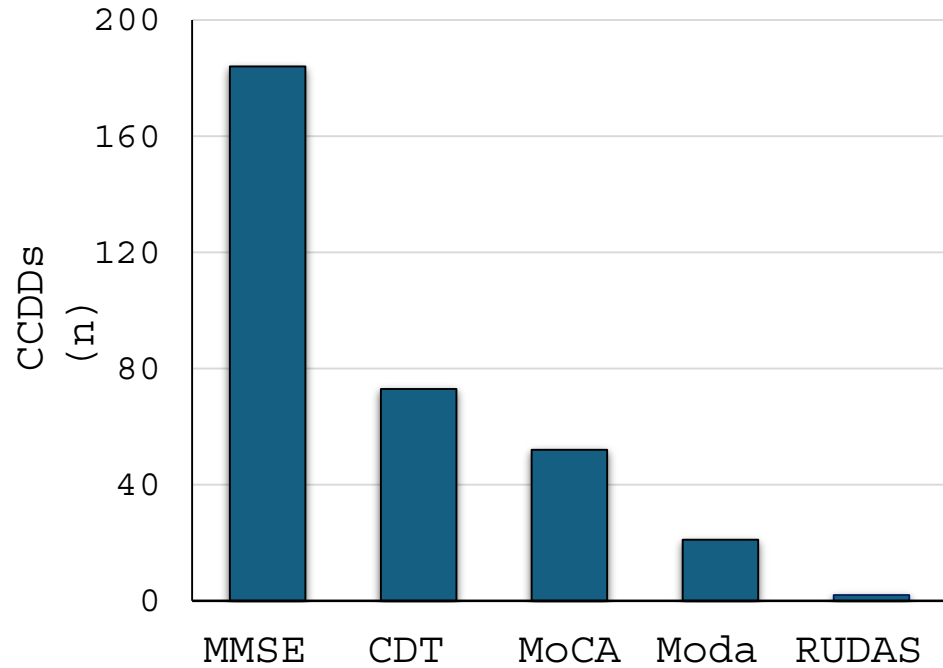
Available resources for migrants with cognitive disturbances at the surveyed CCDDs, by geographic macro-area



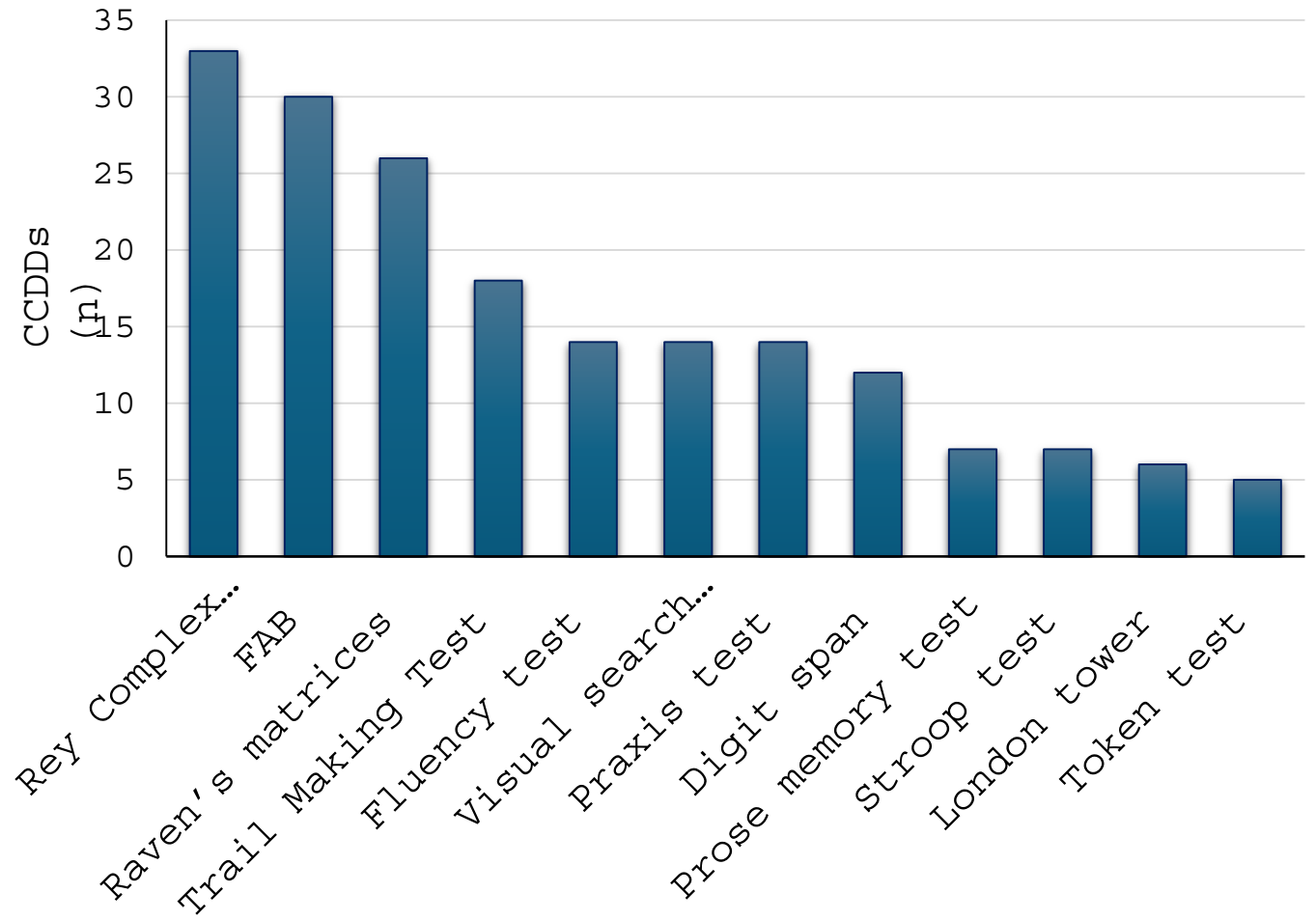
NATIONWIDE SURVEY OF CENTERS FOR COGNITIVE DISORDERS AND DEMENTIA (CCDDs)

Cognitive assessment of migrants

Screening cognitive tests



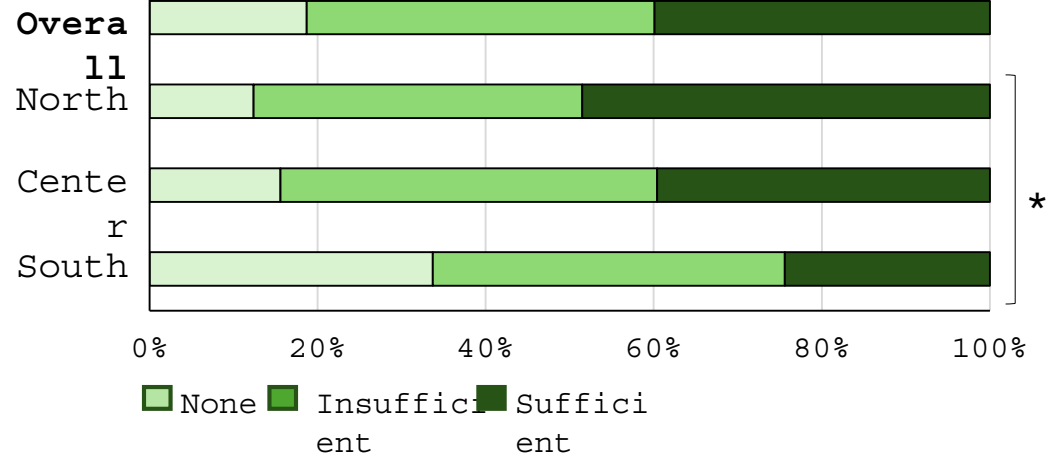
Neuropsychological tests



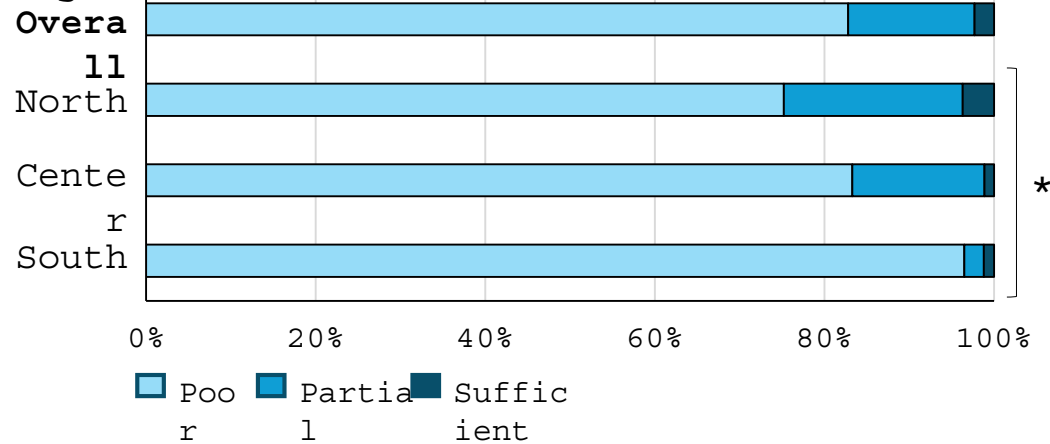
NATIONWIDE SURVEY OF CENTERS FOR COGNITIVE DISORDERS AND DEMENTIA (CCDDs)

Cognitive assessment of migrants, by geographic macro-area

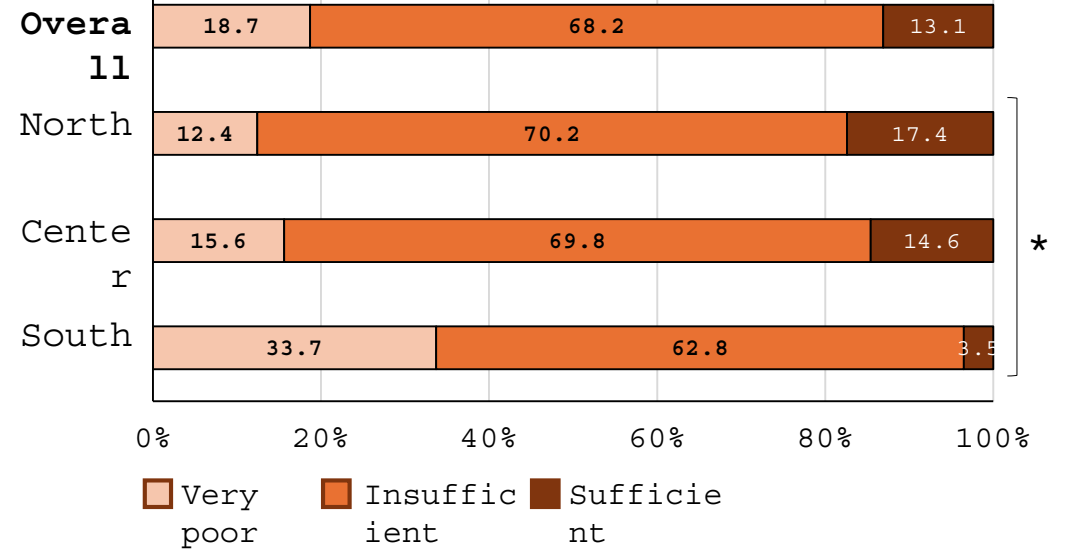
Accuracy of the cognitive assessment of migrants



Culture-sensitiveness of the cognitive assessment of migrants



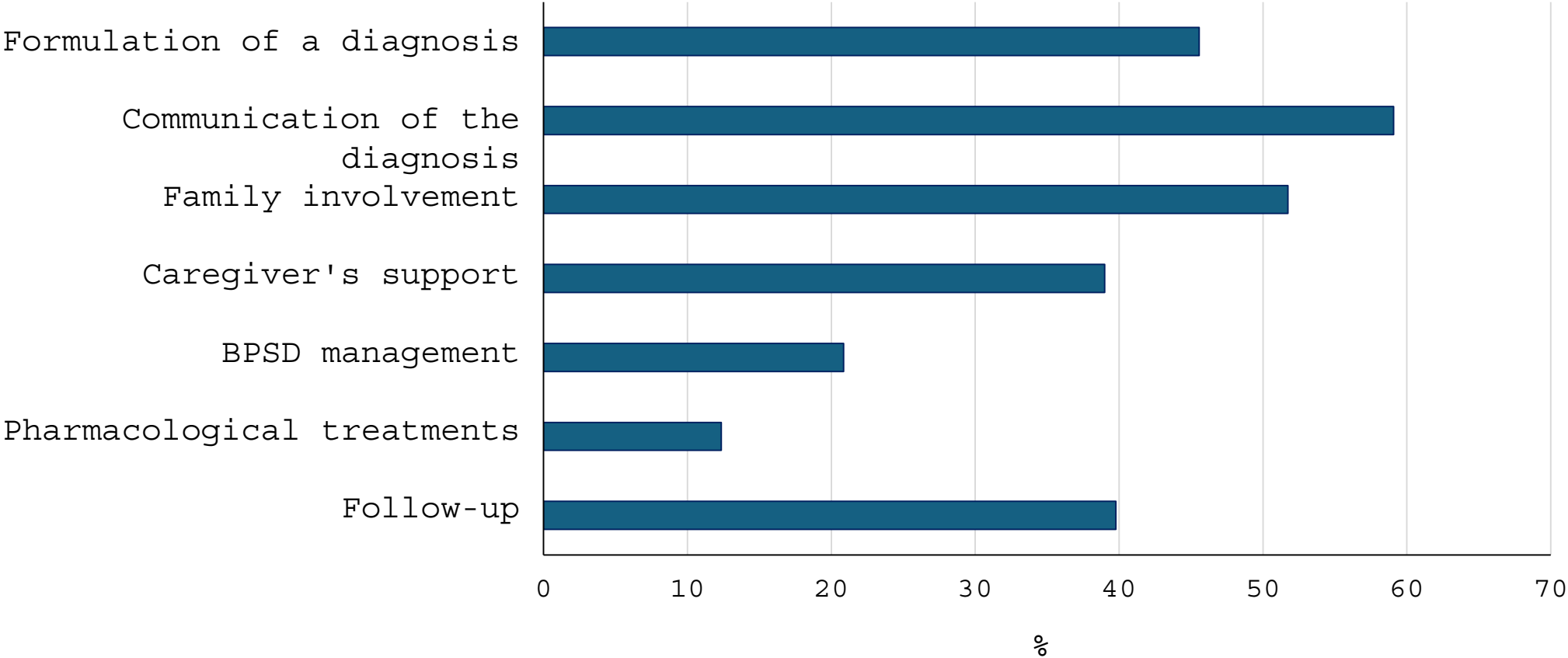
Overall quality of the cognitive assessment of migrants



*p < 0.001 (chi-square test)

NATIONWIDE SURVEY OF CENTERS FOR COGNITIVE DISORDERS AND DEMENTIA (CCDDs)

Challenges encountered in the provision of care for migrants with cognitive disturbances based on the experience of the surveyed CCDDs



NATIONWIDE SURVEY OF CENTERS FOR COGNITIVE DISORDERS AND DEMENTIA (CCDDs)

A relevant number of migrants are being referred to CCDDs

Italian CCDDs are not adequately prepared to assist people with cognitive disorders with diverse cultural background:

- There is the need to develop, validate, and implement screening tools and neuropsychological tests that may support a **cross-cultural cognitive assessment**;
- The collaboration of CCDDs with **professional interpreters and cultural mediators** should be reinforced and possibly supported by dedicated recommendations/guidelines;
- CCDDs should provide **culturally adapted raising-awareness material and information** on dementia.
- Overall lower quality of cognitive assessment in CCDD the Southern regions

Piano Nazionale
Demenze

Linee guida

PDITA

Neurological Sciences (2024) 45:525–538
<https://doi.org/10.1007/s10072-023-06958-8>

ORIGINAL ARTICLE

A new national survey of centers for cognitive disorders and dementias in Italy

Ilaria Bacigalupo¹ · Francesco Giacquinto² · Emanuela Salmi³ · Giulia Carnevale⁴ · Roberta Vaccaro^{4,5} · Fabio Matascioli^{6*} · Giulia Remoli⁷ · Nicola Vinacore⁸ · Patrizia Lorenzini⁹ · the Permanent Table of the National Dementia Plan Study Group and the CCDDs Study Group

Received: 11 May 2023 / Accepted: 8 July 2023 / Published online: 18 August 2023
 © The Author(s) 2023

Abstract
Introduction A new national survey has been carried out by the Italian Centers for Cognitive Disorders and Dementias (CCDDs). The aim of this new national survey is to provide a comprehensive description of the characteristics, organizational aspects of the CCDDs, and experiences during the COVID-19 pandemic.
Methods A list of all national CCDDs was requested from the delegates of each Italian region. The online questionnaire is divided in two main sections: a profile section, containing information on location and accessibility, and a data collection form covering organization, services, treatments, activities, and any service interruptions caused by the COVID-19 outbreak.
Results In total, 511 out of 534 (96%) facilities completed the profile section, while 450 out of 534 (84%) CCDDs also completed the data collection form. Almost half of the CCDDs (55.1%) operated for 3 or fewer days a week. About one-third of the facilities had at least two professional figures among neurologists, geriatricians and psychiatrists. In 2020, only a third of facilities were open all the time, but in 2021, two-thirds of the facilities were open.
Conclusion This paper provides an update on the current status of CCDDs in Italy, which still shows considerable heterogeneity. The survey revealed a modest improvement in the functioning of CCDDs, although substantial efforts are still required to ensure the diagnosis and care of patients with dementia.

Table 2 Comparisons between two surveys conducted in 2015 and 2022: CCDDs using a MCT according to geographical macro-areas, presence of at least one psychologist or neuropsychologist in the staff and type of CCDD

	2015	2022	p-value
CCDDs using MCT	229/501 (45.7%) N = 229	257/450 (57.1%) N = 257	0.001
<i>Psychologist in the CCDD staff</i>			
At least one	187 (81.7%)	223 (86.8%)	0.122
No psychologist or neuropsychologist	42 (18.3%)	34 (13.2%)	0.122
<i>Geographical macro-area of CCDD</i>			
Northern Italy	127 (55.5%)	149 (58.0%)	0.579
Central Italy	44 (19.2%)	43 (16.7%)	0.473
Southern Italy and Islands	58 (25.3%)	65 (25.3%)	1.000
<i>Type of CCDD</i>			
Territorial services	57 (24.9%)	95 (37.0%)	0.004
Hospital-based	138 (60.3%)	125 (48.6%)	0.010
University-based/IRCCS	34 (14.8%)	37 (14.4%)	0.901

MCT minimum core test, CCDD Centers for Cognitive Disorders and Dementias, IRCCS Istituti di Ricovero e Cura a Carattere Scientifico

* Aging Clin Exp Res. 2024 Dec 20;37(1):1. doi: 10.1007/s40520-024-02869-6

Thank you for your attention



ImmIDem Study Group



immidem

Marco Canevelli
Benedetta Contoli
Ilaria Bacigalupo
Francesco Sciancalepore
Emanuela Salvi
Angela Giusti
Eleonora Lacorte
Guido Bellomo
Ilaria Palazzesi
Paola Piscopo
Maria Cristina Porrello
Giulia Remoli
Antonio Ancidoni
Anna Chiara Di Nolfi
Francesca Zambri
Nicola Vanacore



Luca De Fiore
Norina Di Blasio
Benedetta Ferrucci
Caterina Visco



SAPIENZA
UNIVERSITÀ DI ROMA

Giuseppe Bruno
Giulia Sarti
Emanuela Salati
Chiara Pecorari



DIEP/Lazio

Dipartimento di Epidemiologia
del Servizio Sanitario Regionale
Regione Lazio

Anna Maria Bargagli
Nerina Agabiti
Laura Angelici
Silvia Cascini
Anna Acampora
Laura Cacciani
Marina Davoli



Sistema Socio Sanitario



ASST Fatebenefratelli Sacco

Leonardo Pantoni
Simone Pomati
Ilaria Cova
Alessia Nicotra
Giorgia Maestri
Anna Maria Forgione